



THE AMERICAN COLLEGE, MADURAI

(An Autonomous Institution Affiliated to Madurai Kamaraj University)

Re-accredited (2nd Cycle) by NAAC with Grade “A” CGPA – 3.46 on a 4 - point scale

AQAR 2020 – 2021

Criterion 1 – Curricular Aspects

1.4 Feedback

Stakeholders Report



The American College, Madurai
NAAC – Criterion I Curricular Aspects
Student Feedback Report (2020 – 2021)

For the academic year 2020 – 21 students' feedback has been collected from UG and PG students in the main campus and satellite campus on eight key parameters through Google form.

The eight important parameters analysed are

- 1) How do you rate the course you are undergoing in terms of the content across different semesters?
- 2) How do you perceive the availability of text and reference materials in the library?
- 3) Express your opinion with regard to the relevance of the subjects included in your curriculum
- 4) State your opinion with regard to academic environment of the college for effective learning
- 5) Do you agree that the courses you study are latest and up to date?
- 6) How do you rate the percentage of courses having focus on skill development and entrepreneurship?
- 7) Mention the level of outcomes that you have attained from the course you have studied
- 8) How do you rate the components of your internal assessment?

The data was compiled and analysed through statistical tools. The mean scores across various parameters were computed and analysed


Dr. M. DAVAMANI CHRISTOBER
Principal & Secretary
The American College
Madurai-625 002

Student Feedback Report (2020 – 2021) – Main Campus

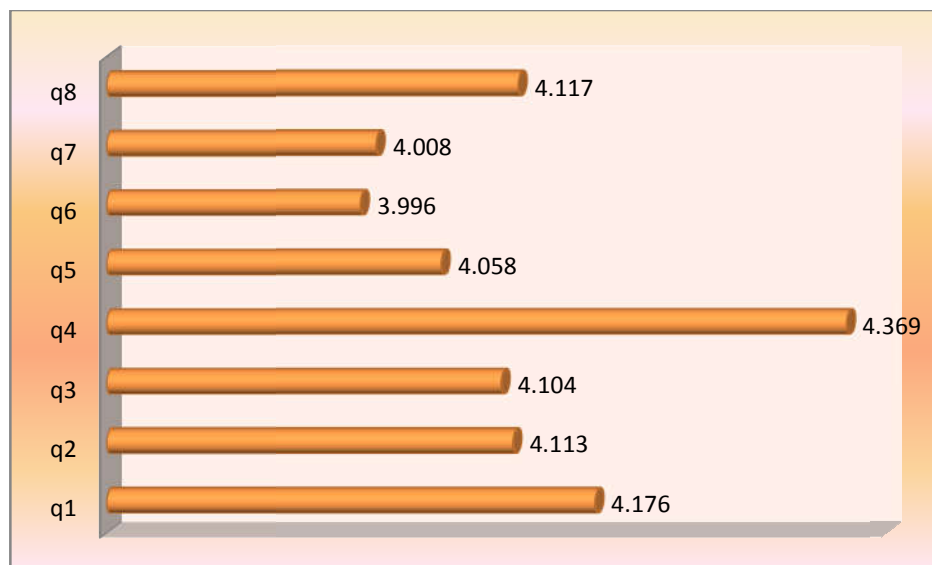
Table -1

Mean score comparison of parameters across all Departments

Parameters	N	Mean	Std. Deviation
1) How do you rate the course you are undergoing in terms of the content across different semesters?	1521	4.17	.713
2) How do you perceive the availability of text and reference materials in the library?	1521	4.11	.761
3) Express your opinion with regard to the relevance of the subjects included in your curriculum	1521	4.10	.684
4) State your opinion with regard to academic environment of the college for effective learning	1521	4.36	.754
5) Do you agree that the courses you study are latest and up to date?	1521	4.05	.743
6) How do you rate the percentage of courses having focus on skill development and entrepreneurship?	1521	3.99	.795
7) Mention the level of outcomes that you have attained from the course you have studied	1521	4.00	.756
8) How do you rate the components of your internal assessment?	1521	4.11	.734

Figure - 1

Mean score comparison of parameters across all Departments



Interpretation:

To examine the perception of the students towards the curriculum offered by the college eight key parameters were identified. Based on mean comparison it is found that all the eight parameters displayed a satisfactory score of more than 4

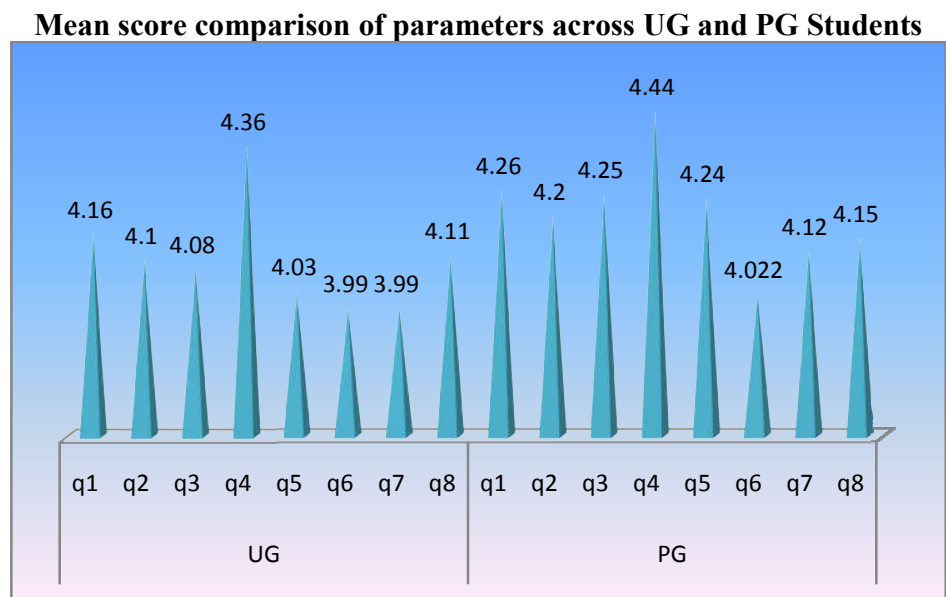
Table -2

Mean score comparison of parameters across UG and PG Students

Parameters		N	Mean	Std. Deviation
UG	1) How do you rate the course you are undergoing in terms of the content across different semesters?	1382	4.16	.721
	2) How do you perceive the availability of text and reference materials in the library?	1382	4.10	.769
	3) Express your opinion with regard to the relevance of the subjects included in your curriculum	1382	4.08	.687
	4) State your opinion with regard to academic environment of the college for effective learning	1382	4.36	.760
	5) Do you agree that the courses you study are latest and up to date?	1382	4.03	.756
	6) How do you rate the percentage of courses having focus on skill development and entrepreneurship?	1382	3.99	.793
	7) Mention the level of outcomes that you have attained from the course you have studied	1382	3.99	.767
	8) How do you rate the components of your internal assessment?	1382	4.11	.741
PG	1) How do you rate the course you are undergoing in terms of the content across different semesters?	139	4.26	.632
	2) How do you perceive the availability of text and reference materials in the library?	139	4.20	.664
	3) Express your opinion with regard to the relevance of the subjects included in your curriculum	139	4.25	.629
	4) State your opinion with regard to academic environment of the college for effective learning	139	4.44	.693

5) Do you agree that the courses you study are latest and up to date?	139	4.24	.575
6) How do you rate the percentage of courses having focus on skill development and entrepreneurship?	139	4.022	.820
7) Mention the level of outcomes that you have attained from the course you have studied	139	4.12	.630
8) How do you rate the components of your internal assessment?	139	4.15	.662

Figure -2



Interpretation:

Based on mean comparison of all the eight key parameters across the under graduate and post graduate departments it is found that both undergraduate and post graduate students have a higher agreement score

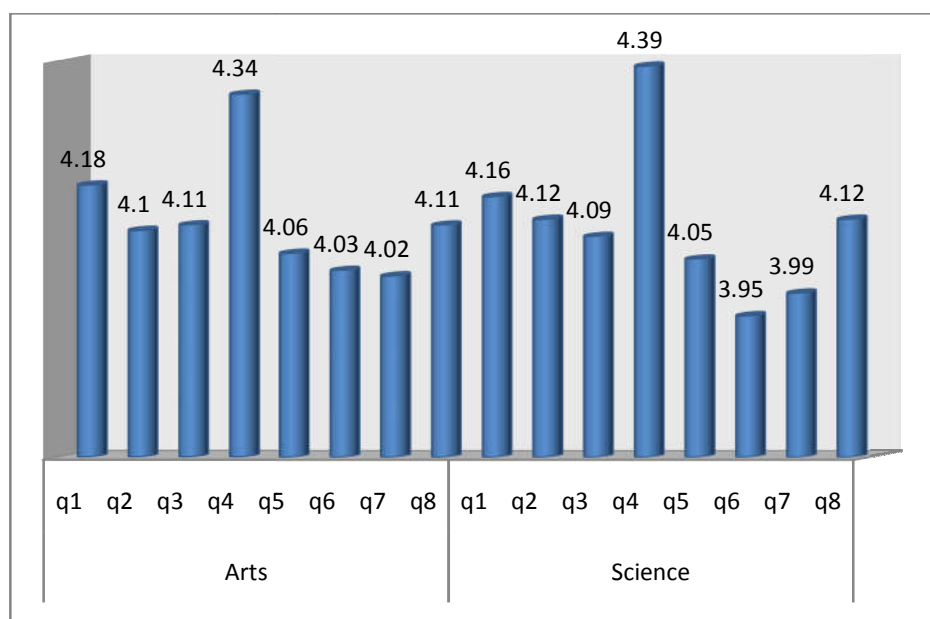
Table -3**Mean score comparison of parameters across Arts and Science Students**

Parameters		N	Mean	Std. Deviation
Arts	1) How do you rate the course you are undergoing in terms of the content across different semesters?	718	4.18	.729
	2) How do you perceive the availability of text and reference materials in the library?	718	4.10	.778
	3) Express your opinion with regard to the relevance of the subjects included in your curriculum	718	4.11	.693
	4) State your opinion with regard to academic environment of the college for effective learning	718	4.34	.774
	5) Do you agree that the courses you study are latest and up to date?	718	4.06	.744
	6) How do you rate the percentage of courses having focus on skill development and entrepreneurship?	718	4.03	.778
	7) Mention the level of outcomes that you have attained from the course you have studied	718	4.02	.757
	8) How do you rate the components of your internal assessment?	718	4.11	.754
Science	1) How do you rate the course you are undergoing in terms of the content across different semesters?	803	4.16	.700
	2) How do you perceive the availability of text and reference materials in the library?	803	4.12	.745
	3) Express your opinion with regard to the relevance of the subjects included in your curriculum	803	4.09	.675
	4) State your opinion with regard to academic environment of the college for effective learning	803	4.39	.736

5) Do you agree that the courses you study are latest and up to date?	803	4.05	.743
6) How do you rate the percentage of courses having focus on skill development and entrepreneurship?	803	3.95	.809
7) Mention the level of outcomes that you have attained from the course you have studied	803	3.99	.755
8) How do you rate the components of your internal assessment?	803	4.12	.716

Figure -3

Mean score comparison of Parameters across Arts and Science Students



Interpretation:

From table 3 and figure 3 it is clear that the mean scores obtained for the eight key parameters were relatively high for both Arts and Science stream. Students studying in Arts and Science streams have a higher mean score on the parameter “Academic environment of the college for effective learning”.

Table -4

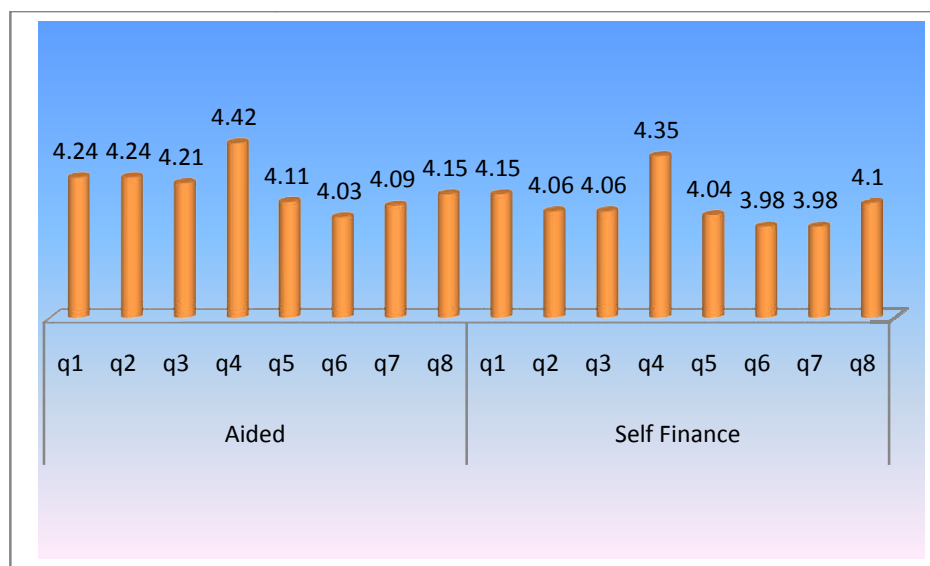
Mean score comparison of Parameters across students studying in Aided and Self Finance stream

Parameters		N	Mean	Std. Deviation
Aided	1) How do you rate the course you are undergoing in terms of the content across different semesters?	385	4.24	.683
	2) How do you perceive the availability of text and reference materials in the library?	385	4.24	.706
	3) Express your opinion with regard to the relevance of the subjects included in your curriculum	385	4.21	.648
	4) State your opinion with regard to academic environment of the college for effective learning	385	4.42	.732
	5) Do you agree that the courses you study are latest and up to date?	385	4.11	.688
	6) How do you rate the percentage of courses having focus on skill development and entrepreneurship?	385	4.03	.769
	7) Mention the level of outcomes that you have attained from the course you have studied	385	4.09	.703
	8) How do you rate the components of your internal assessment?	385	4.15	.714
Self Finance	1) How do you rate the course you are undergoing in terms of the content across different semesters?	1136	4.15	.722
	2) How do you perceive the availability of text and reference materials in the library?	1136	4.06	.773
	3) Express your opinion with regard to the relevance of the subjects included in your curriculum	1136	4.06	.691

4) State your opinion with regard to academic environment of the college for effective learning	1136	4.35	.761
5) Do you agree that the courses you study are latest and up to date?	1136	4.04	.761
6) How do you rate the percentage of courses having focus on skill development and entrepreneurship?	1136	3.98	.804
7) Mention the level of outcomes that you have attained from the course you have studied	1136	3.98	.772
8) How do you rate the components of your internal assessment?	1136	4.10	.740

Figure -4

Mean score comparison of Parameters across students studying in Aided and Self Finance stream



Interpretation:

The mean scores obtained for the eight parameters were relatively high for students belonging to both the Aided and Self finance stream. Students studying in both the streams have a higher mean score on the parameter “Academic environment of the college for effective learning”.

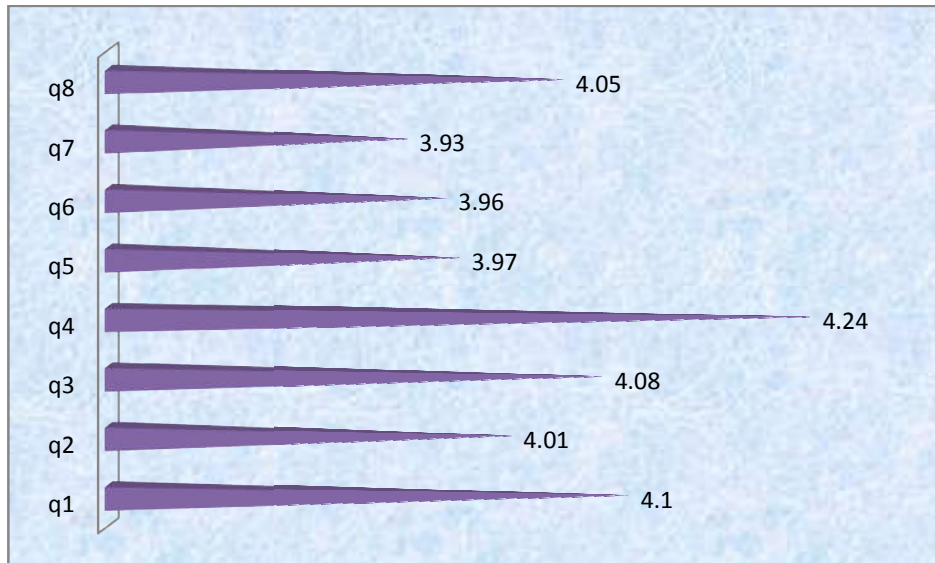
Table -5

Mean score comparison of Parameters for the Department – “B.Com”

Parameters	N	Mean	Std. Deviation
1) How do you rate the course you are undergoing in terms of the content across different semesters?	137	4.10	.750
2) How do you perceive the availability of text and reference materials in the library?	137	4.01	.891
3) Express your opinion with regard to the relevance of the subjects included in your curriculum	137	4.08	.675
4) State your opinion with regard to academic environment of the college for effective learning	137	4.24	.855
5) Do you agree that the courses you study are latest and up to date?	137	3.97	.752
6) How do you rate the percentage of courses having focus on skill development and entrepreneurship?	137	3.96	.817
7) Mention the level of outcomes that you have attained from the course you have studied	137	3.93	.778
8) How do you rate the components of your internal assessment?	137	4.05	.8429

Figure -5

Mean score comparison of Parameters for the Department – “B.Com”



Interpretation:

Table 5 and figure 5 depicts the scores of the eight key parameters with respect to the department “B.Com”. Results reveals that students have a higher mean score value of more than four on five parameters and a moderate value of more than 3.5 on three parameters

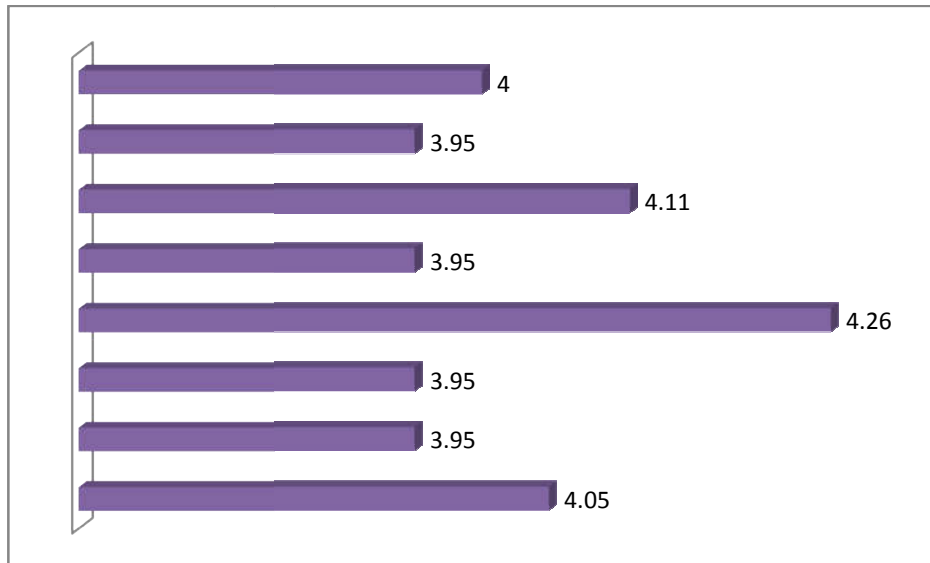
Table -6

Mean score comparison of Parameters for the Department – “B.Com - CA”

Parameters	N	Mean	Std. Deviation
1) How do you rate the course you are undergoing in terms of the content across different semesters?	19	4.05	0.621
2) How do you perceive the availability of text and reference materials in the library?	19	3.95	0.621
3) Express your opinion with regard to the relevance of the subjects included in your curriculum	19	3.95	0.621
4) State your opinion with regard to academic environment of the college for effective learning	19	4.26	0.653
5) Do you agree that the courses you study are latest and up to date?	19	3.95	0.705
6) How do you rate the percentage of courses having focus on skill development and entrepreneurship?	19	4.11	0.658
7) Mention the level of outcomes that you have attained from the course you have studied	19	3.95	0.621
8) How do you rate the components of your internal assessment?	19	4.00	0.667

Figure -6

Mean score comparison of Parameters for the Department – “B.Com - CA”



Interpretation:

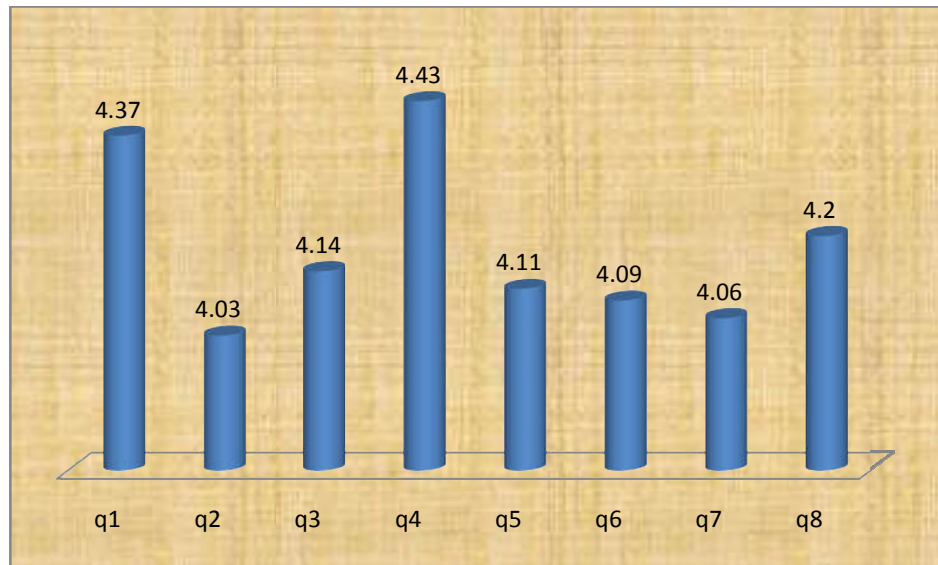
Based on the results in table 6 and figure 6 , the mean scores with regard to the eight key parameters for the department “B.Com C.A” reveals that students have a higher mean score value of more than four on four parameters and a moderate value of more than 3.5 on four parameters

Table -7

Mean score comparison of Parameters for the Department “B.Com - PA”

Parameters	N	Mean	Std. Deviation
1) How do you rate the course you are undergoing in terms of the content across different semesters?	35	4.37	0.808
2) How do you perceive the availability of text and reference materials in the library?	35	4.03	0.618
3) Express your opinion with regard to the relevance of the subjects included in your curriculum	35	4.14	0.733
4) State your opinion with regard to academic environment of the college for effective learning	35	4.43	0.608
5) Do you agree that the courses you study are latest and up to date?	35	4.11	0.832
6) How do you rate the percentage of courses having focus on skill development and entrepreneurship?	35	4.09	0.887
7) Mention the level of outcomes that you have attained from the course you have studied	35	4.06	0.725
8) How do you rate the components of your internal assessment?	35	4.20	0.719

Figure -7
Mean score comparison of Parameters for the Department “B.Com - PA”



Interpretation:

The results of table 7 and figure 7 of the eight key parameters with respect to the department “B.Com PA” reveals that students were found to have a higher mean score value of more than four on all the eight parameters.

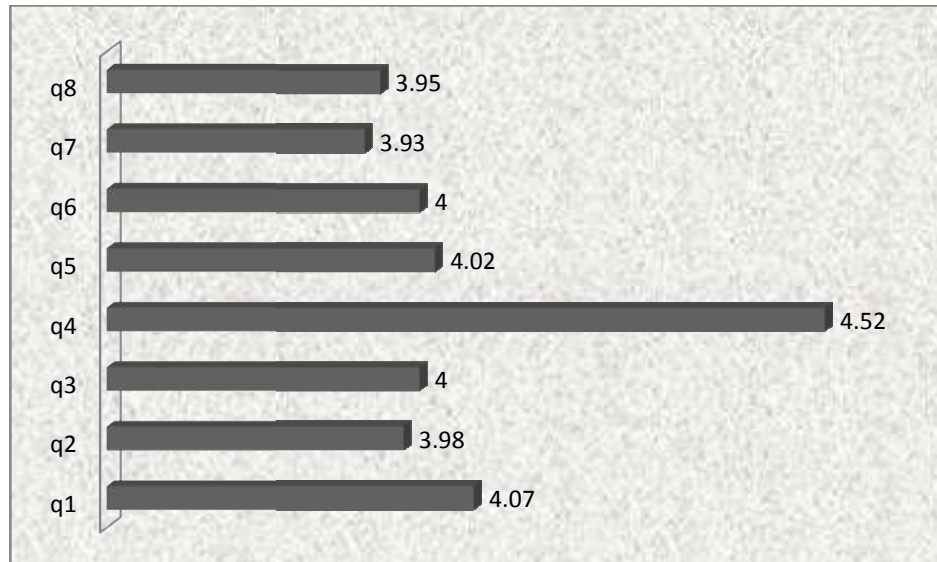
Table -8

Mean score comparison of Parameters for the Department “B.Com - IT”

Parameters	N	Mean	Std. Deviation
1) How do you rate the course you are undergoing in terms of the content across different semesters?	44	4.07	0.695
2) How do you perceive the availability of text and reference materials in the library?	44	3.98	0.792
3) Express your opinion with regard to the relevance of the subjects included in your curriculum	44	4.00	0.715
4) State your opinion with regard to academic environment of the college for effective learning	44	4.52	0.699
5) Do you agree that the courses you study are latest and up to date?	44	4.02	0.628
6) How do you rate the percentage of courses having focus on skill development and entrepreneurship?	44	4.00	0.715
7) Mention the level of outcomes that you have attained from the course you have studied	44	3.93	0.789
8) How do you rate the components of your internal assessment?	44	3.95	0.834

Figure -8

Mean score comparison of Parameters for the Department “B.Com - IT”



Interpretation:

The mean scores obtained for the eight key parameters with respect to the department “B.Com IT” reveals that students have a higher mean score value of more than four on five parameters and a moderate value of more than 3.5 on three parameters

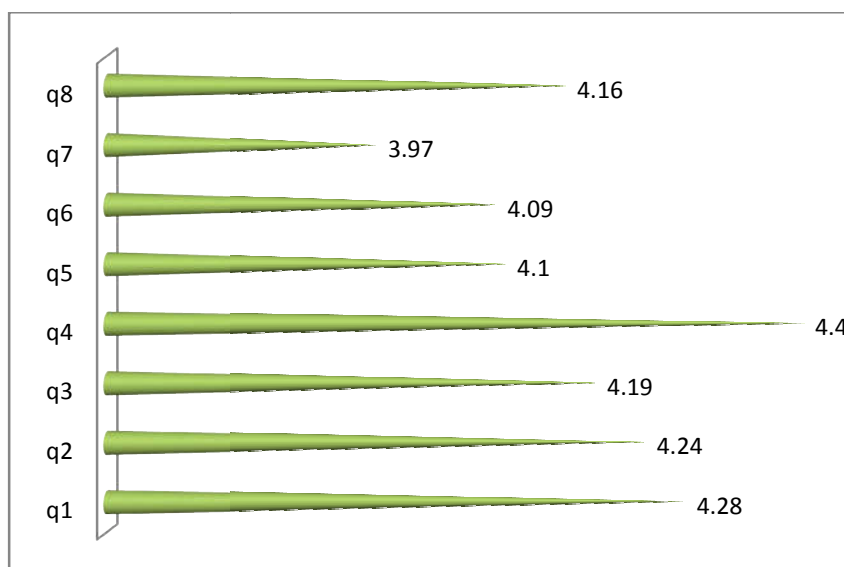
Table -9

Mean score comparison of Parameters for the Department “B.Sc Biochemistry”

Parameters	N	Mean	Std. Deviation
1) How do you rate the course you are undergoing in terms of the content across different semesters?	58	4.28	0.556
2) How do you perceive the availability of text and reference materials in the library?	58	4.24	0.602
3) Express your opinion with regard to the relevance of the subjects included in your curriculum	58	4.19	0.576
4) State your opinion with regard to academic environment of the college for effective learning	58	4.40	0.674
5) Do you agree that the courses you study are latest and up to date?	58	4.10	0.693
6) How do you rate the percentage of courses having focus on skill development and entrepreneurship?	58	4.09	0.683
7) Mention the level of outcomes that you have attained from the course you have studied	58	3.97	0.675
8) How do you rate the components of your internal assessment?	58	4.16	0.586

Figure -9

Mean score comparison of Parameters for the Department “B.Sc Biochemistry”



Interpretation:

The mean scores in table 9 and figure 9 with regard to the eight key parameters for the department “B.Sc Biochemistry” reveals that students have a higher mean score value of more than four on seven parameters and a moderate value of more than 3.5 on one parameter

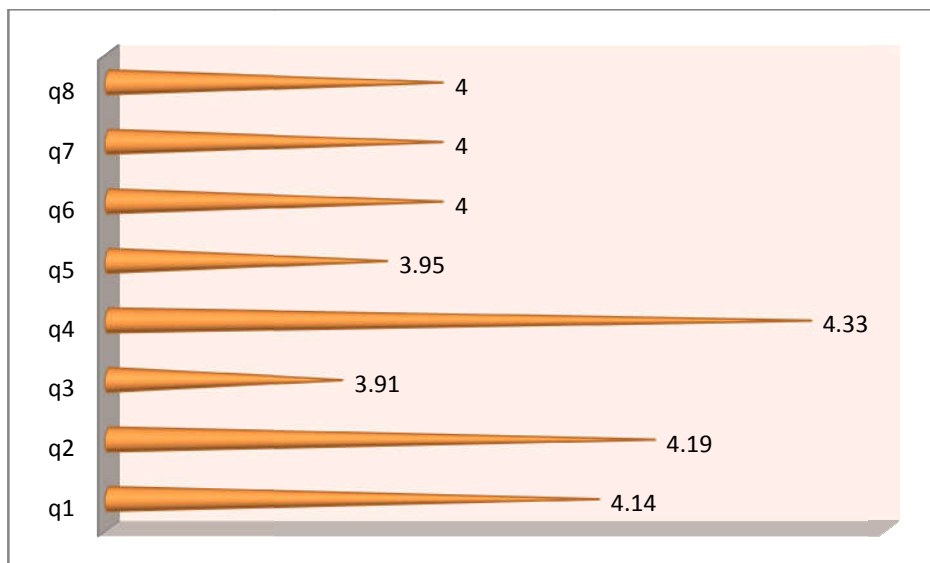
Table -10

Mean score comparison of Parameters for the Department “B.Sc Botany”

Parameters	N	Mean	Std. Deviation
1) How do you rate the course you are undergoing in terms of the content across different semesters?	21	4.14	0.655
2) How do you perceive the availability of text and reference materials in the library?	21	4.19	0.750
3) Express your opinion with regard to the relevance of the subjects included in your curriculum	21	3.91	0.768
4) State your opinion with regard to academic environment of the college for effective learning	21	4.33	0.730
5) Do you agree that the courses you study are latest and up to date?	21	3.95	0.590
6) How do you rate the percentage of courses having focus on skill development and entrepreneurship?	21	4.00	0.633
7) Mention the level of outcomes that you have attained from the course you have studied	21	4.00	0.837
8) How do you rate the components of your internal assessment?	21	4.00	0.707

Figure -10

Mean score comparison of Parameters for the Department “B.Sc Botany”



Interpretation:

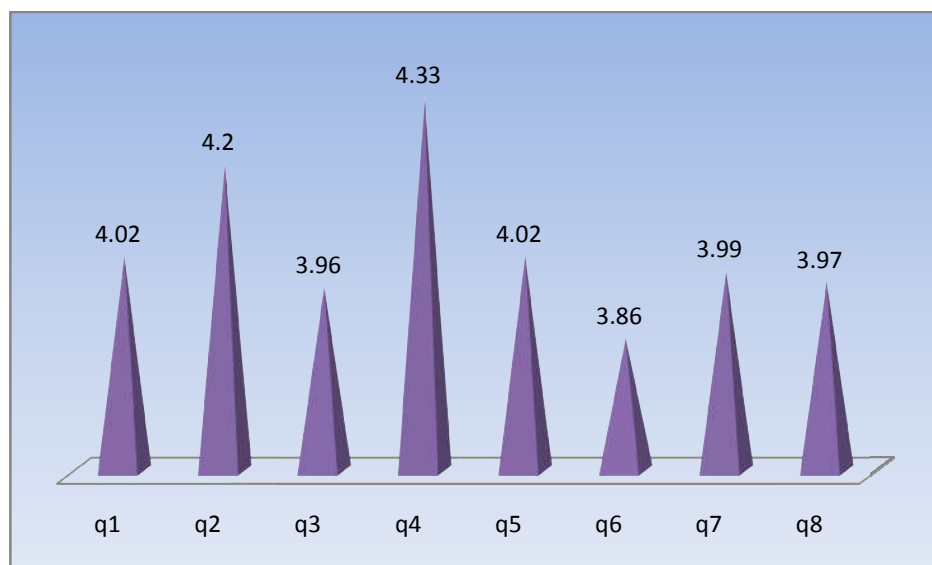
Based on the mean score of the eight key parameters with respect to the department “B.Sc Botany” it was found that students have a higher mean score value of more than four on six parameters and a moderate value of more than 3.5 on two parameters

Table -11**Mean score comparison of Parameters for the Department “B.Sc Chemistry”**

Parameters	N	Mean	Std. Deviation
1) How do you rate the course you are undergoing in terms of the content across different semesters?	66	4.02	0.813
2) How do you perceive the availability of text and reference materials in the library?	66	4.20	0.915
3) Express your opinion with regard to the relevance of the subjects included in your curriculum	66	3.96	0.831
4) State your opinion with regard to academic environment of the college for effective learning	66	4.33	0.847
5) Do you agree that the courses you study are latest and up to date?	66	4.02	0.690
6) How do you rate the percentage of courses having focus on skill development and entrepreneurship?	66	3.86	0.875
7) Mention the level of outcomes that you have attained from the course you have studied	66	3.99	0.832
8) How do you rate the components of your internal assessment?	66	3.97	0.744

Figure -11

Mean score comparison of Parameters for the Department “B.Sc Chemistry”



Interpretation:

The eight key parameters in table 11 and figure 11 with respect to the department “B.Sc Chemistry” shows that students have a higher mean score value of more than four on four parameters and a moderate value of more than 3.5 on four parameters

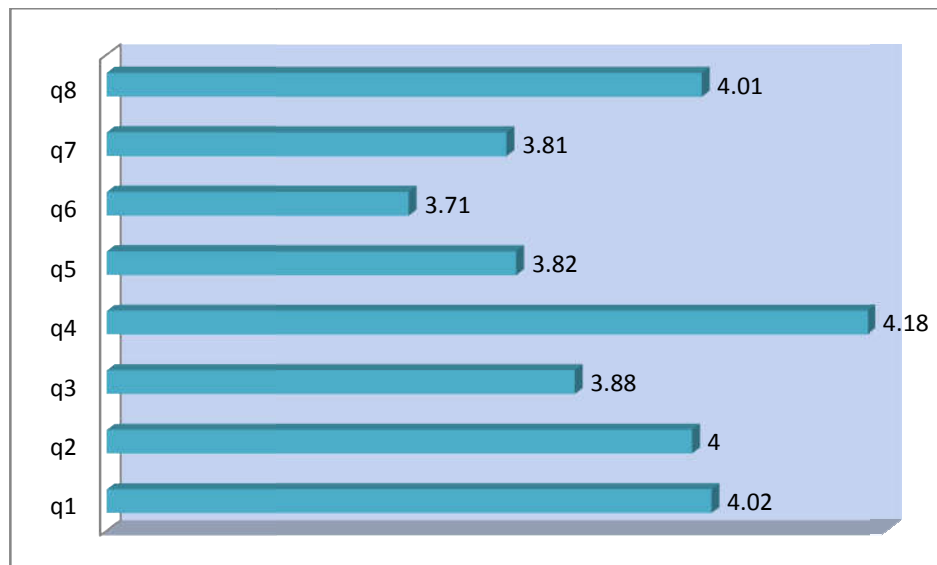
Table -12

Mean score comparison of Parameters for the Department “B.Sc Computer science”

Parameters	N	Mean	Std. Deviation
1) How do you rate the course you are undergoing in terms of the content across different semesters?	99	4.02	0.782
2) How do you perceive the availability of text and reference materials in the library?	99	4.00	0.808
3) Express your opinion with regard to the relevance of the subjects included in your curriculum	99	3.88	0.718
4) State your opinion with regard to academic environment of the college for effective learning	99	4.18	0.787
5) Do you agree that the courses you study are latest and up to date?	99	3.82	0.908
6) How do you rate the percentage of courses having focus on skill development and entrepreneurship?	99	3.71	0.895
7) Mention the level of outcomes that you have attained from the course you have studied	99	3.81	0.829
8) How do you rate the components of your internal assessment?	99	4.01	0.789

Figure -12

Mean score comparison of Parameters for the Department “B.Sc Computer science”



Interpretation:

The eight key parameters depicted in table 12 and figure 12 with respect to the department “B.Sc Computer science” indicates that students have a higher mean score value of more than four on four parameters and a moderate value of more than 3.5 on four parameters

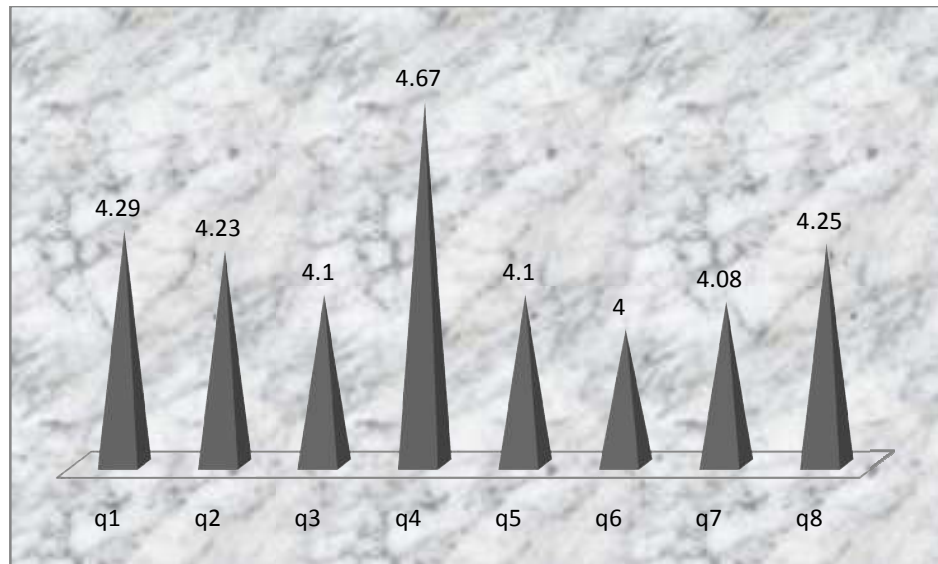
Table -13

Mean score comparison of Parameters for the Department “B.Sc Food Science and Nutrition”

Parameters	N	Mean	Std. Deviation
1) How do you rate the course you are undergoing in terms of the content across different semesters?	48	4.29	0.651
2) How do you perceive the availability of text and reference materials in the library?	48	4.23	0.627
3) Express your opinion with regard to the relevance of the subjects included in your curriculum	48	4.10	0.778
4) State your opinion with regard to academic environment of the college for effective learning	48	4.67	0.519
5) Do you agree that the courses you study are latest and up to date?	48	4.10	0.831
6) How do you rate the percentage of courses having focus on skill development and entrepreneurship?	48	4.00	0.899
7) Mention the level of outcomes that you have attained from the course you have studied	48	4.08	0.739
8) How do you rate the components of your internal assessment?	48	4.25	0.636

Figure -13

Mean score comparison of Parameters for the Department “B.Sc Food Science and Nutrition”



Interpretation:

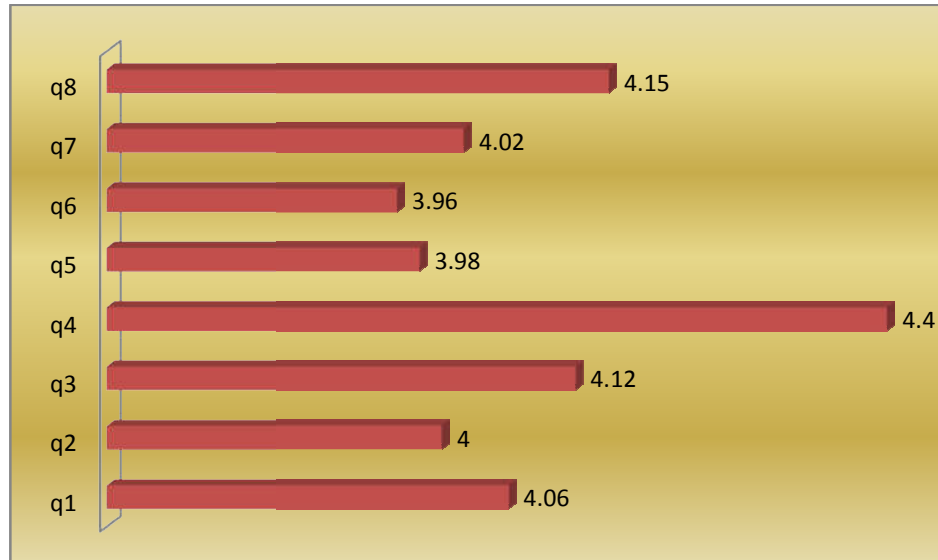
Mean score comparison of the eight key parameters with respect to the department “B.Sc Food Science and Nutrition” reveals that students have a higher mean score value of more than four on all the eight parameters.

Table -14**Mean score comparison of Parameters for the Department “B.Sc Information Technology”**

Parameters	N	Mean	Std. Deviation
1) How do you rate the course you are undergoing in terms of the content across different semesters?	52	4.06	0.698
2) How do you perceive the availability of text and reference materials in the library?	52	4.00	0.686
3) Express your opinion with regard to the relevance of the subjects included in your curriculum	52	4.12	0.583
4) State your opinion with regard to academic environment of the college for effective learning	52	4.40	0.823
5) Do you agree that the courses you study are latest and up to date?	52	3.98	0.874
6) How do you rate the percentage of courses having focus on skill development and entrepreneurship?	52	3.96	0.839
7) Mention the level of outcomes that you have attained from the course you have studied	52	4.02	0.700
8) How do you rate the components of your internal assessment?	52	4.15	0.638

Figure -14

Mean score comparison of Parameters for the Department “B.Sc Information Technology”



Interpretation:

The mean scores obtained for the eight key parameters with respect to the department “B.Sc Information Technology”. Test results indicates that students have a higher mean score value of more than four on six parameters and a moderate value of more than 3.5 on two parameters

Table -15**Mean score comparison of Parameters for the Department “B.Sc Mathematics”**

Parameters	N	Mean	Std. Deviation
1) How do you rate the course you are undergoing in terms of the content across different semesters?	79	4.06	0.806
2) How do you perceive the availability of text and reference materials in the library?	79	4.08	0.813
3) Express your opinion with regard to the relevance of the subjects included in your curriculum	79	4.09	0.624
4) State your opinion with regard to academic environment of the college for effective learning	79	4.34	0.749
5) Do you agree that the courses you study are latest and up to date?	79	4.00	0.751
6) How do you rate the percentage of courses having focus on skill development and entrepreneurship?	79	3.94	0.790
7) Mention the level of outcomes that you have attained from the course you have studied	79	3.84	0.839
8) How do you rate the components of your internal assessment?	79	4.20	0.723

Figure -15

Mean score comparison of Parameters for the Department “B.Sc Mathematics”



Interpretation:

Table 15 and figure 15 reveals the mean scores of eight key parameters with respect to the department “B.Sc Mathematics”. It was found that students have a higher mean score value of more than four on six parameters and a moderate value of more than 3.5 on two parameters

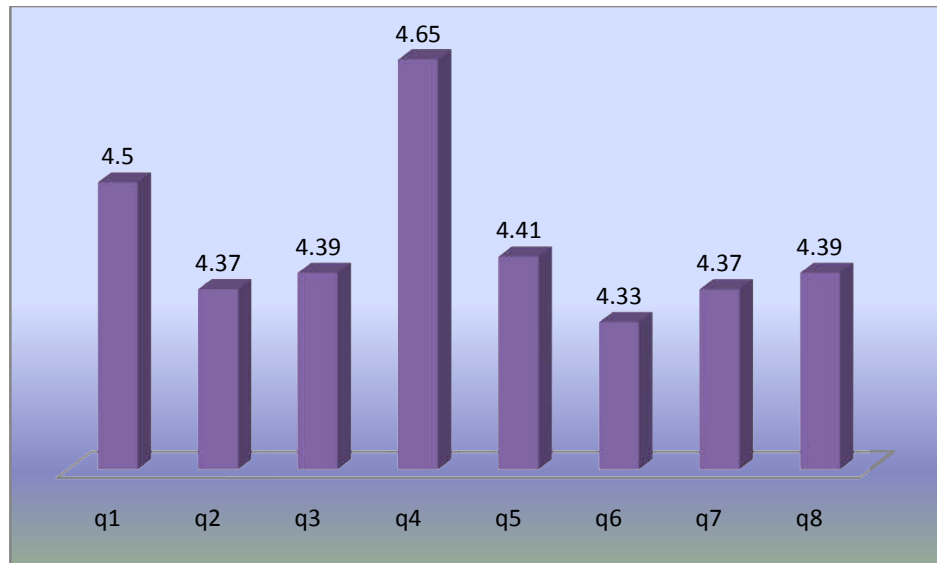
Table -16

Mean score comparison of Parameters for the Department “B.Sc Microbiology”

Parameters	N	Mean	Std. Deviation
1) How do you rate the course you are undergoing in terms of the content across different semesters?	54	4.50	0.607
2) How do you perceive the availability of text and reference materials in the library?	54	4.37	0.708
3) Express your opinion with regard to the relevance of the subjects included in your curriculum	54	4.39	0.627
4) State your opinion with regard to academic environment of the college for effective learning	54	4.65	0.588
5) Do you agree that the courses you study are latest and up to date?	54	4.41	0.599
6) How do you rate the percentage of courses having focus on skill development and entrepreneurship?	54	4.33	0.752
7) Mention the level of outcomes that you have attained from the course you have studied	54	4.37	0.681
8) How do you rate the components of your internal assessment?	54	4.39	0.787

Figure -16

Mean score comparison of Parameters for the Department “B.Sc Microbiology”



Interpretation:

Mean score comparison of the eight key parameters with respect to the department “B.Sc Microbiology” reveals that students have a higher mean score value of more than four on all the eight parameters.

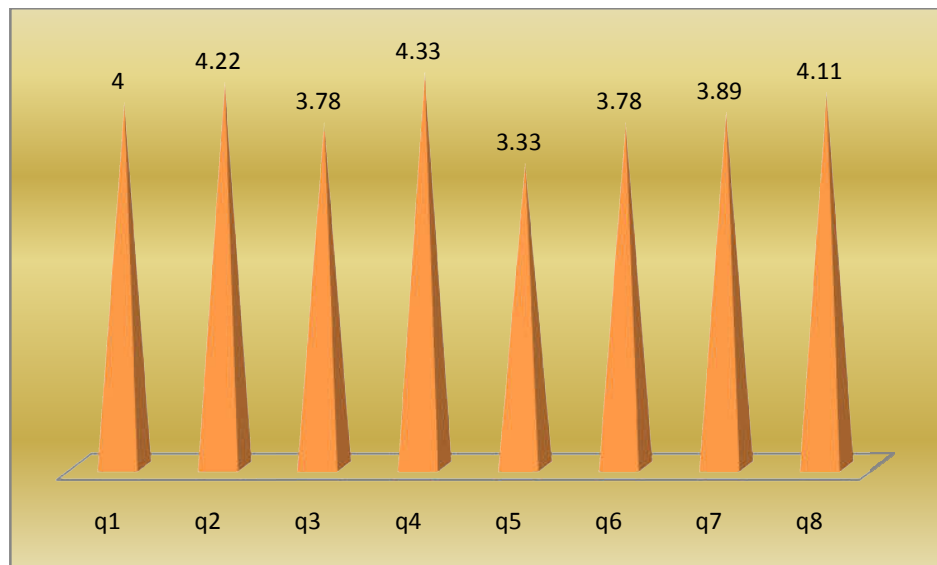
Table -17

Mean score comparison of Parameters for the Department “B.Sc Physical Education”

Parameters	N	Mean	Std. Deviation
1) How do you rate the course you are undergoing in terms of the content across different semesters?	9	4.00	0.707
2) How do you perceive the availability of text and reference materials in the library?	9	4.22	0.441
3) Express your opinion with regard to the relevance of the subjects included in your curriculum	9	3.78	0.441
4) State your opinion with regard to academic environment of the college for effective learning	9	4.33	0.500
5) Do you agree that the courses you study are latest and up to date?	9	3.33	1.323
6) How do you rate the percentage of courses having focus on skill development and entrepreneurship?	9	3.78	0.441
7) Mention the level of outcomes that you have attained from the course you have studied	9	3.89	0.601
8) How do you rate the components of your internal assessment?	9	4.11	0.928

Figure -17

Mean score comparison of Parameters for the Department “B.Sc Physical Education”



Interpretation:

Mean score comparison of the eight key parameters with respect to the department “B.Sc Physical Education” reveals that students have a higher mean score value of more than four on four parameters and a lower mean score of less than 3.5 on one parameter

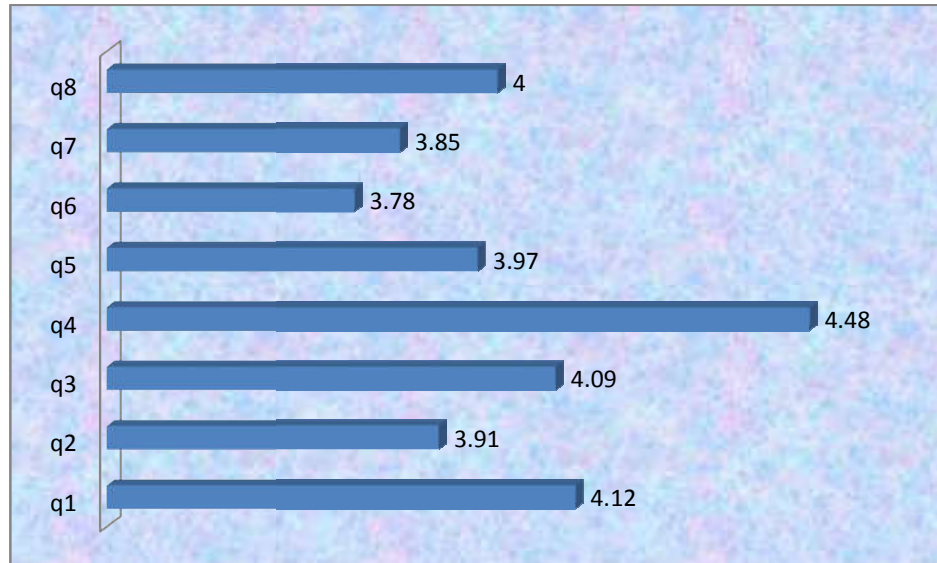
Table -18

Mean score comparison of Parameters for the Department “B.Sc Physics”

Parameters	N	Mean	Std. Deviation
1) How do you rate the course you are undergoing in terms of the content across different semesters?	58	4.12	0.703
2) How do you perceive the availability of text and reference materials in the library?	58	3.91	0.801
3) Express your opinion with regard to the relevance of the subjects included in your curriculum	58	4.09	0.657
4) State your opinion with regard to academic environment of the college for effective learning	58	4.48	0.707
5) Do you agree that the courses you study are latest and up to date?	58	3.97	0.648
6) How do you rate the percentage of courses having focus on skill development and entrepreneurship?	58	3.78	0.727
7) Mention the level of outcomes that you have attained from the course you have studied	58	3.85	0.745
8) How do you rate the components of your internal assessment?	58	4.00	0.772

Figure -18

Mean score of Academic Progression dimensions for the Department “B.Sc Physics”



Interpretation:

Table 18 and figure 18 reveals the mean scores of eight key parameters with respect to the department “B.Sc Physics”. Test results shows that students have a higher mean score value of more than four on four parameters and a moderate value of more than 3.5 on four parameters

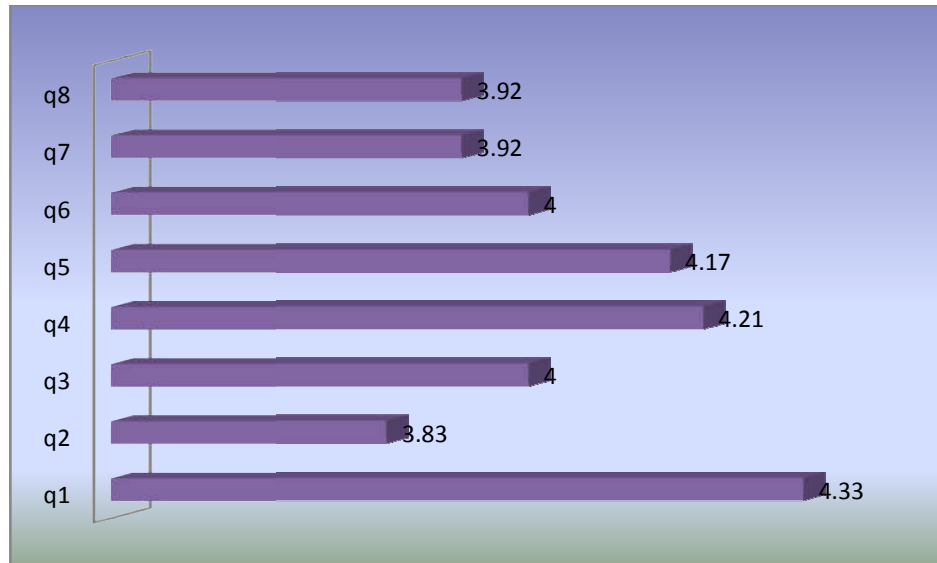
Table -19

Mean score comparison of Parameters for the Department “B.Sc Psychology”

Parameters	N	Mean	Std. Deviation
1) How do you rate the course you are undergoing in terms of the content across different semesters?	24	4.33	0.702
2) How do you perceive the availability of text and reference materials in the library?	24	3.83	0.761
3) Express your opinion with regard to the relevance of the subjects included in your curriculum	24	4.00	0.659
4) State your opinion with regard to academic environment of the college for effective learning	24	4.21	0.833
5) Do you agree that the courses you study are latest and up to date?	24	4.17	0.868
6) How do you rate the percentage of courses having focus on skill development and entrepreneurship?	24	4.00	0.722
7) Mention the level of outcomes that you have attained from the course you have studied	24	3.92	0.776
8) How do you rate the components of your internal assessment?	24	3.92	0.654

Figure -19

Mean score comparison of Parameters for the Department “B.Sc Psychology”



Interpretation:

The eight key parameters in table 19 and figure 19 with respect to the department “B.Sc Psychology” reveals that students have a higher mean score value of more than five on four parameters and a moderate value of more than 3.5 on three parameters

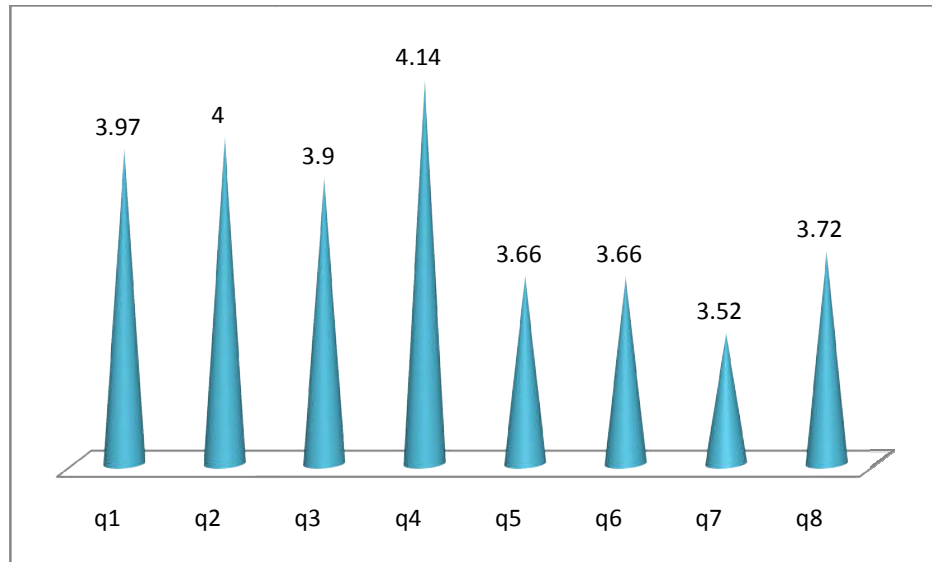
Table -20

Mean score comparison of Parameters for the Department “B.Sc Visual Communication”

Parameters	N	Mean	Std. Deviation
1) How do you rate the course you are undergoing in terms of the content across different semesters?	29	3.97	1.017
2) How do you perceive the availability of text and reference materials in the library?	29	4.00	0.707
3) Express your opinion with regard to the relevance of the subjects included in your curriculum	29	3.90	0.772
4) State your opinion with regard to academic environment of the college for effective learning	29	4.14	0.743
5) Do you agree that the courses you study are latest and up to date?	29	3.66	1.010
6) How do you rate the percentage of courses having focus on skill development and entrepreneurship?	29	3.66	0.936
7) Mention the level of outcomes that you have attained from the course you have studied	29	3.52	1.153
8) How do you rate the components of your internal assessment?	29	3.72	0.702

Figure -20

Mean score comparison of Parameters for the Department “B.Sc Visual Communication”



Interpretation:

Table 20 and figure 20 reveals the mean scores of eight key parameters with respect to the department “B.Sc Visual Communication”. It was found that students have a higher mean score value of more than four on two parameters and a moderate value of more than 3.5 on six parameters

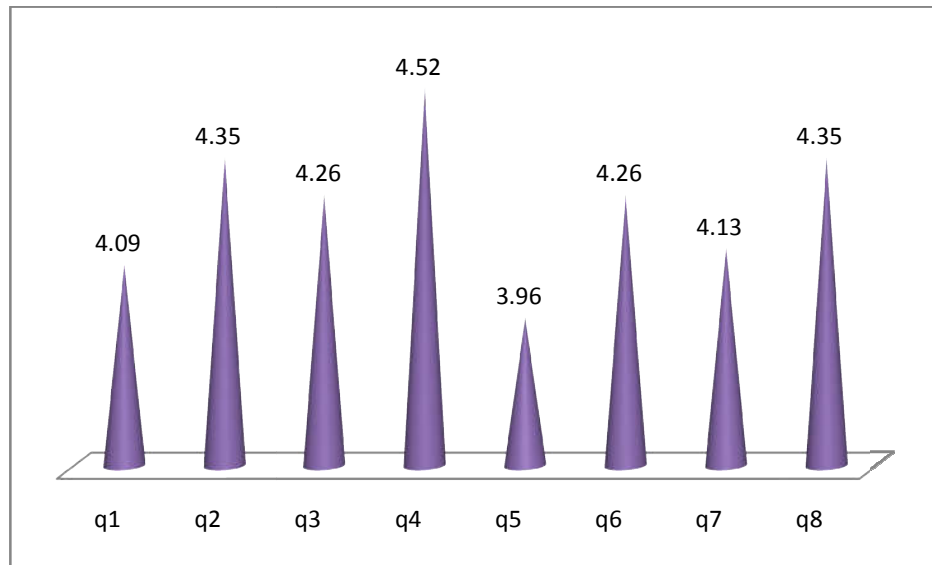
Table -21

Mean score comparison of Parameters for the Department “B.Sc Zoology”

Parameters	N	Mean	Std. Deviation
1) How do you rate the course you are undergoing in terms of the content across different semesters?	23	4.09	0.596
2) How do you perceive the availability of text and reference materials in the library?	23	4.35	0.573
3) Express your opinion with regard to the relevance of the subjects included in your curriculum	23	4.26	0.449
4) State your opinion with regard to academic environment of the college for effective learning	23	4.52	0.790
5) Do you agree that the courses you study are latest and up to date?	23	3.96	0.706
6) How do you rate the percentage of courses having focus on skill development and entrepreneurship?	23	4.26	0.752
7) Mention the level of outcomes that you have attained from the course you have studied	23	4.13	0.757
8) How do you rate the components of your internal assessment?	23	4.35	0.573

Figure -21

Mean score comparison of Parameters for the Department “B.Sc Zoology”



Interpretation:

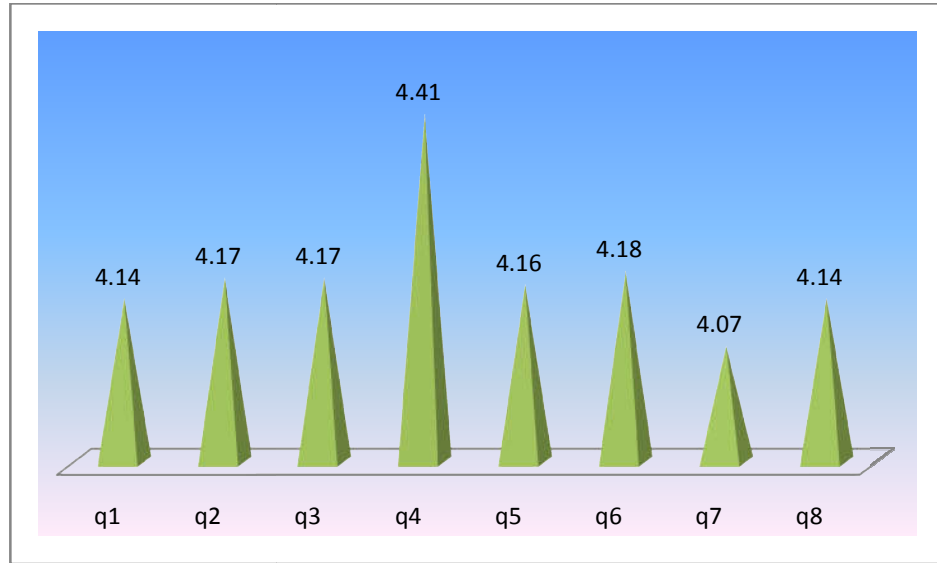
The eight key parameters depicted in table 21 and figure 21 with respect to the department “B.Sc Zoology” depicts that students have a higher mean score value of more than four on seven parameters and a moderate value of more than 3.5 on one parameter

Table -22**Mean score comparison of Parameters for the Department “BA Economics”**

Parameters	N	Mean	Std. Deviation
1) How do you rate the course you are undergoing in terms of the content across different semesters?	71	4.14	0.703
2) How do you perceive the availability of text and reference materials in the library?	71	4.17	0.676
3) Express your opinion with regard to the relevance of the subjects included in your curriculum	71	4.17	0.697
4) State your opinion with regard to academic environment of the college for effective learning	71	4.41	0.748
5) Do you agree that the courses you study are latest and up to date?	71	4.16	0.730
6) How do you rate the percentage of courses having focus on skill development and entrepreneurship?	71	4.18	0.743
7) Mention the level of outcomes that you have attained from the course you have studied	71	4.07	0.662
8) How do you rate the components of your internal assessment?	71	4.14	0.743

Figure -22

Mean score comparison of Parameters for the department “BA Economics”



Interpretation:

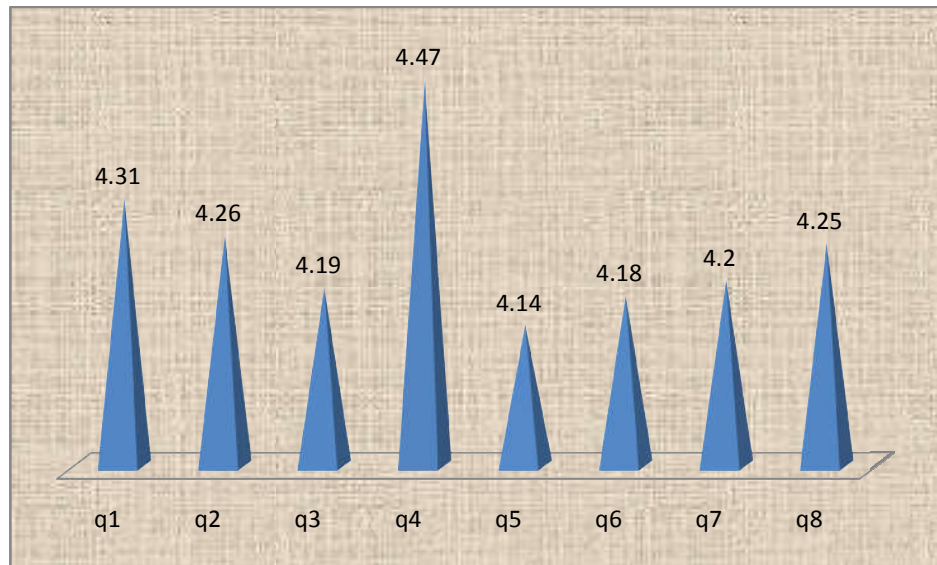
The mean scores obtained for the eight key parameters with respect to the department “BA Economics” reveals that students have a higher mean score value of more than four on all the eight parameters.

Table -23**Mean score comparison of Parameters for the Department “BA English”**

Parameters	N	Mean	Std. Deviation
1) How do you rate the course you are undergoing in terms of the content across different semesters?	154	4.31	0.566
2) How do you perceive the availability of text and reference materials in the library?	154	4.26	0.635
3) Express your opinion with regard to the relevance of the subjects included in your curriculum	154	4.19	0.613
4) State your opinion with regard to academic environment of the college for effective learning	154	4.47	0.628
5) Do you agree that the courses you study are latest and up to date?	154	4.14	0.620
6) How do you rate the percentage of courses having focus on skill development and entrepreneurship?	154	4.18	0.606
7) Mention the level of outcomes that you have attained from the course you have studied	154	4.20	0.584
8) How do you rate the components of your internal assessment?	154	4.25	0.567

Figure -23

Mean score comparison of Parameters for the Department “BA English”



Interpretation:

The mean scores obtained on the eight key parameters with respect to the department “BA English” reveal that students have a higher mean score value of more than four on all the eight parameters.

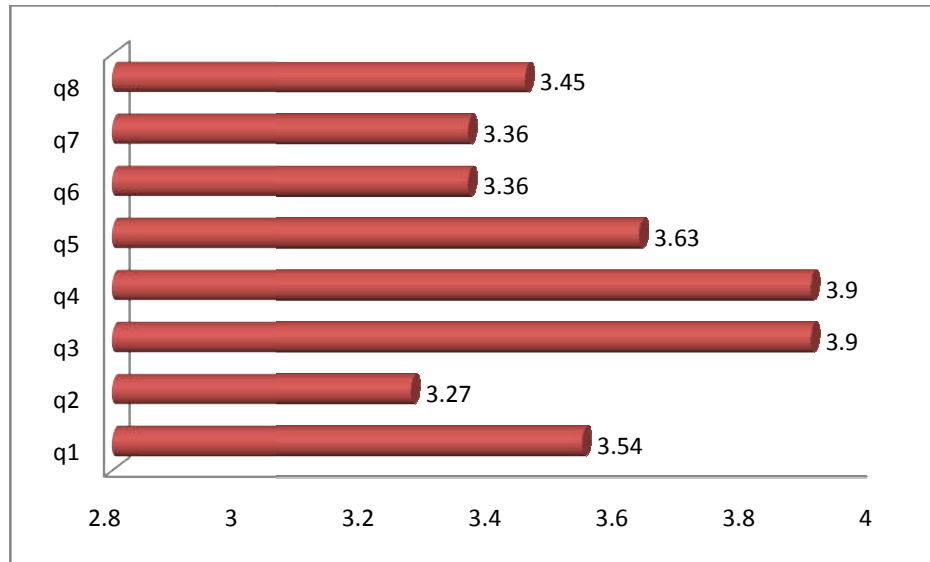
Table -24

Mean score comparison of Parameters for the Department “BA French”

Variables	N	Mean	Std. Deviation
1. How do you rate the course you are undergoing in terms of the content across different semesters	11	3.54	1.128
2. How do you perceive the availability of text and reference materials in the library	11	3.27	1.103
3. Express your opinion with regard to the relevance of the subjects included in your curriculum	11	3.90	.831
4. State your opinion with regard to academic environment of the college for effective learning	11	3.90	1.136
5. Do you agree that the courses you study are latest and up to date	11	3.63	1.026
6. How do you rate the percentage of courses having focus on skill development and entrepreneurship	11	3.36	.924
7. Mention the level of outcomes that you have attained from the course you have studied	11	3.36	1.120
8. How do you rate the components of your internal assessment?	11	3.45	.934

Figure -24

Mean score comparison of Parameters for the Department “BA French”



Interpretation:

The mean score values of the eight key parameters with respect to the department “B.A French” indicate that students reported a moderate mean score for four parameters. Lower mean score of less than 3.5 were found for four parameters.

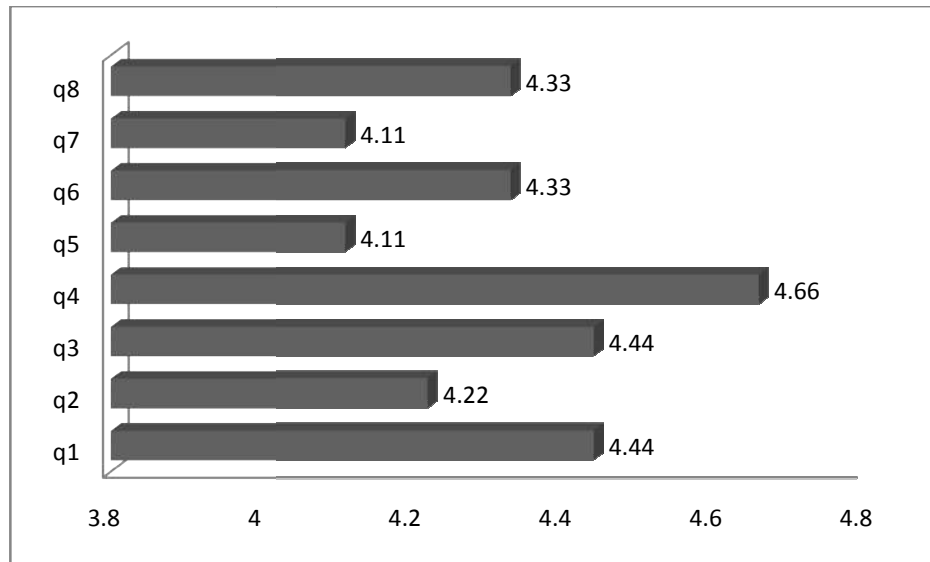
Table -25

Mean score comparison of Parameters for the Department “BA Hindi”

Variables	N	Mean	Std. Deviation
1. How do you rate the course you are undergoing in terms of the content across different semesters	9	4.44	.726
2. How do you perceive the availability of text and reference materials in the library	9	4.22	.833
3. Express your opinion with regard to the relevance of the subjects included in your curriculum	9	4.44	.726
4. State your opinion with regard to academic environment of the college for effective learning	9	4.66	.707
5. Do you agree that the courses you study are latest and up to date	9	4.11	.928
6. How do you rate the percentage of courses having focus on skill development and entrepreneurship	9	4.33	.866
7. Mention the level of outcomes that you have attained from the course you have studied	9	4.11	.928
8. How do you rate the components of your internal assessment?	9	4.33	.866

Figure -25

Mean score comparison of Parameters for the Department “BA Hindi”



Interpretation:

The mean score values of the eight key parameters with respect to the department “B.A Hindi” indicate that students reported a higher mean score of more than four for all the eight parameters.

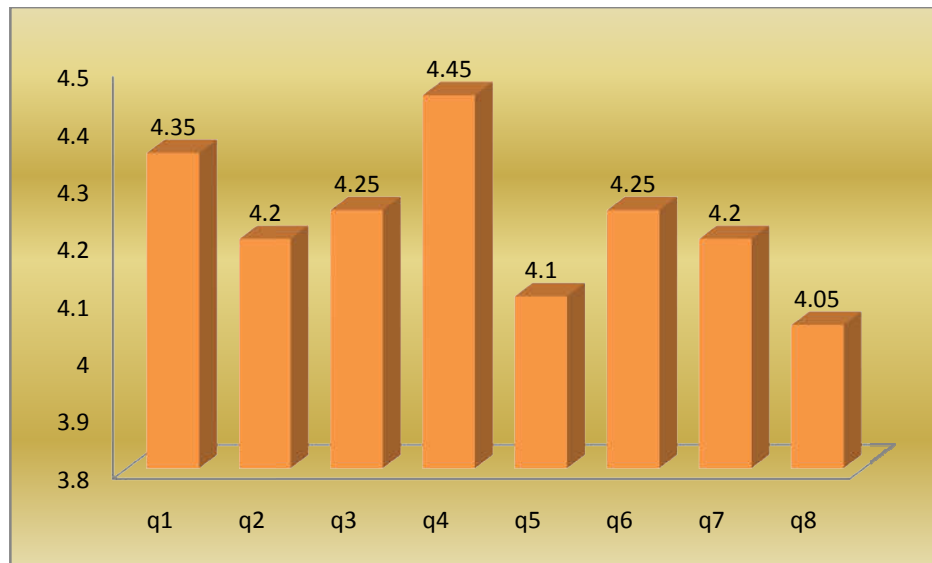
Table -26

Mean score comparison of Parameters for the Department “BA Religion Philosophy Sociology”

Variables	N	Mean	Std. Deviation
1. How do you rate the course you are undergoing in terms of the content across different semesters	20	4.35	.670
2. How do you perceive the availability of text and reference materials in the library	20	4.20	.695
3. Express your opinion with regard to the relevance of the subjects included in your curriculum	20	4.25	.638
4. State your opinion with regard to academic environment of the college for effective learning	20	4.45	.604
5. Do you agree that the courses you study are latest and up to date	20	4.10	.911
6. How do you rate the percentage of courses having focus on skill development and entrepreneurship	20	4.25	.850
7. Mention the level of outcomes that you have attained from the course you have studied	20	4.20	.615
8. How do you rate the components of your internal assessment?	20	4.05	.759

Figure -26

Mean score comparison of Parameters for the Department “BA Religion Philosophy Sociology”



Interpretation:

The eight key parameters depicted in table 26 and figure 26 with respect to the department “B.A Religion Philosophy Sociology” indicate that students reported a higher mean score of more than four for all the eight parameters.

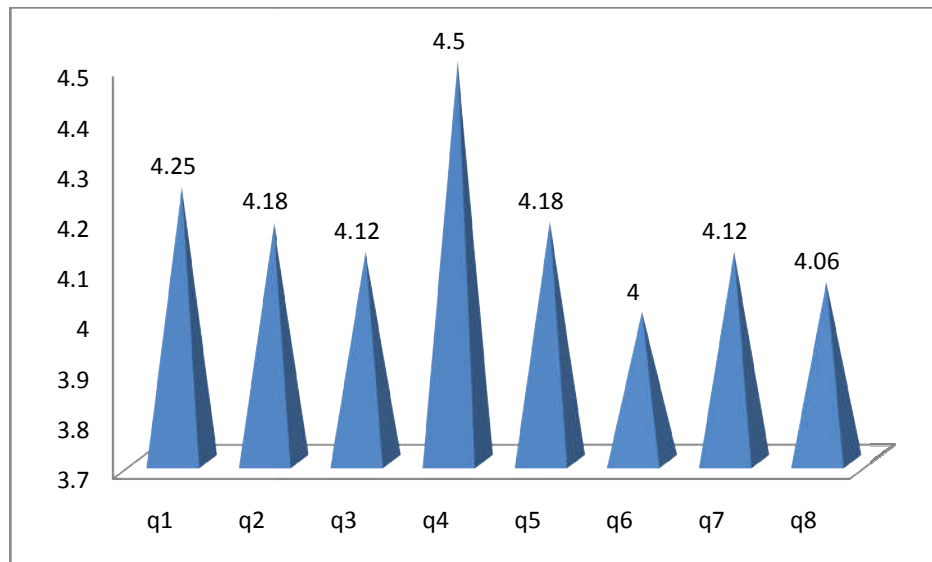
Table -27

Mean score comparison of Parameters for the Department “BA Tamil”

Variables	N	Mean	Std. Deviation
1. How do you rate the course you are undergoing in terms of the content across different semesters	16	4.25	.856
2. How do you perceive the availability of text and reference materials in the library	16	4.18	.910
3. Express your opinion with regard to the relevance of the subjects included in your curriculum	16	4.12	.885
4. State your opinion with regard to academic environment of the college for effective learning	16	4.50	.730
5. Do you agree that the courses you study are latest and up to date	16	4.18	.750
6. How do you rate the percentage of courses having focus on skill development and entrepreneurship	16	4.00	.816
7. Mention the level of outcomes that you have attained from the course you have studied	16	4.12	1.024
8. How do you rate the components of your internal assessment?	16	4.06	.928

Figure -27

Mean score comparison of Parameters for the Department “BA Tamil”



Interpretation:

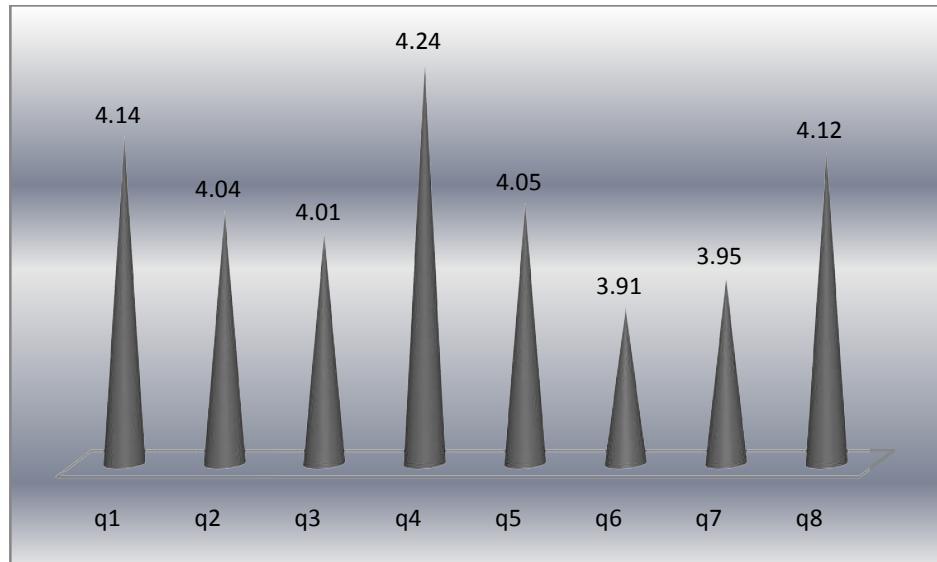
The mean score values of the eight key parameters with respect to the department “B.A Tamil” indicate that students reported a higher mean score of more than four for all the eight parameters.

Table -28**Mean score comparison of Parameters for the Department “BBA”**

Variables	N	Mean	Std. Deviation
1. How do you rate the course you are undergoing in terms of the content across different semesters	97	4.14	0.777
2. How do you perceive the availability of text and reference materials in the library	97	4.04	0.865
3. Express your opinion with regard to the relevance of the subjects included in your curriculum	97	4.01	0.743
4. State your opinion with regard to academic environment of the college for effective learning	97	4.24	0.887
5. Do you agree that the courses you study are latest and up to date	97	4.05	0.741
6. How do you rate the percentage of courses having focus on skill development and entrepreneurship	97	3.91	0.818
7. Mention the level of outcomes that you have attained from the course you have studied	97	3.95	0.713
8. How do you rate the components of your internal assessment?	97	4.12	0.807

Figure -28

Mean score comparison of Parameters for the Department “BBA”



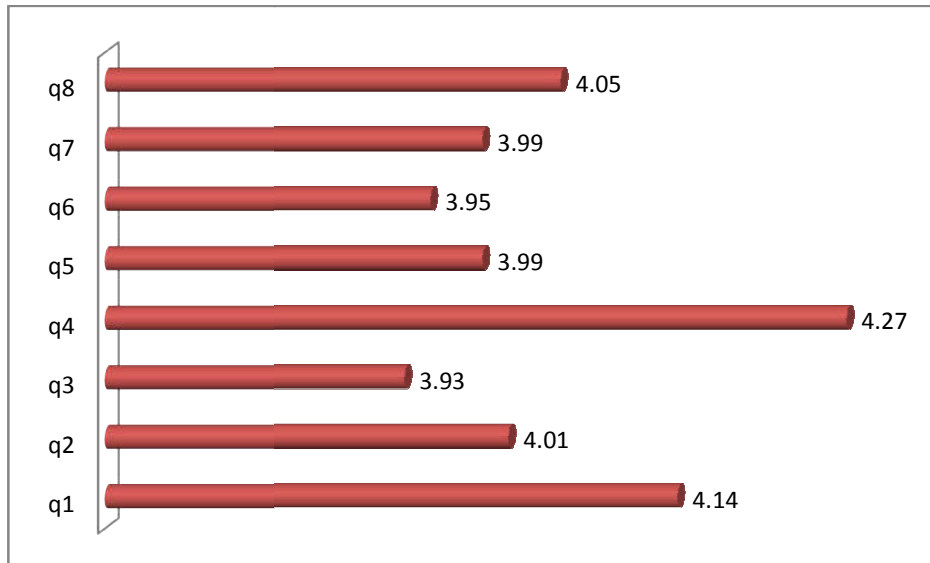
Interpretation:

Table 28 and figure 28 reveals the mean scores of eight key parameters with respect to the department “BBA”. It was found that students have a higher mean score value of more than four on six parameters and a moderate value of more than 3.5 on two parameters

Table -29**Mean score comparison of Parameters for the Department “BCA”**

Variables	N	Mean	Std. Deviation
1. How do you rate the course you are undergoing in terms of the content across different semesters	73	4.14	0.631
2. How do you perceive the availability of text and reference materials in the library	73	4.01	0.736
3. Express your opinion with regard to the relevance of the subjects included in your curriculum	73	3.93	0.631
4. State your opinion with regard to academic environment of the college for effective learning	73	4.27	0.731
5. Do you agree that the courses you study are latest and up to date	73	3.99	0.612
6. How do you rate the percentage of courses having focus on skill development and entrepreneurship	73	3.95	0.762
7. Mention the level of outcomes that you have attained from the course you have studied	73	3.99	0.773
8. How do you rate the components of your internal assessment?	73	4.05	0.762

Figure -29
Mean score comparison of Parameters for the Department “BCA”



Interpretation:

Table 29 and figure 29 reveals the mean scores of eight key parameters with respect to the department “BCA”. It was found that students have a higher mean score value of more than four on four parameters and a moderate value of more than 3.5 on four parameters

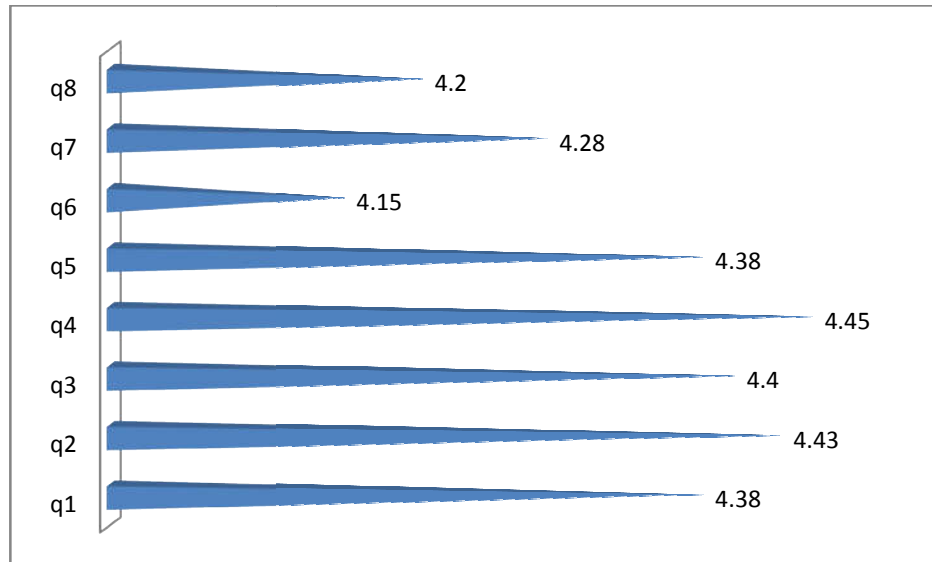
Table -30

Mean score comparison of Parameters for the Department “MA - English”

Variables	N	Mean	Std. Deviation
1. How do you rate the course you are undergoing in terms of the content across different semesters	40	4.38	0.628
2. How do you perceive the availability of text and reference materials in the library	40	4.43	0.747
3. Express your opinion with regard to the relevance of the subjects included in your curriculum	40	4.40	0.672
4. State your opinion with regard to academic environment of the college for effective learning	40	4.45	0.639
5. Do you agree that the courses you study are latest and up to date	40	4.38	0.628
6. How do you rate the percentage of courses having focus on skill development and entrepreneurship	40	4.15	0.736
7. Mention the level of outcomes that you have attained from the course you have studied	40	4.28	0.751
8. How do you rate the components of your internal assessment?	40	4.20	0.687

Figure -30

Mean score comparison of Parameters for the Department “MA - English”



Interpretation:

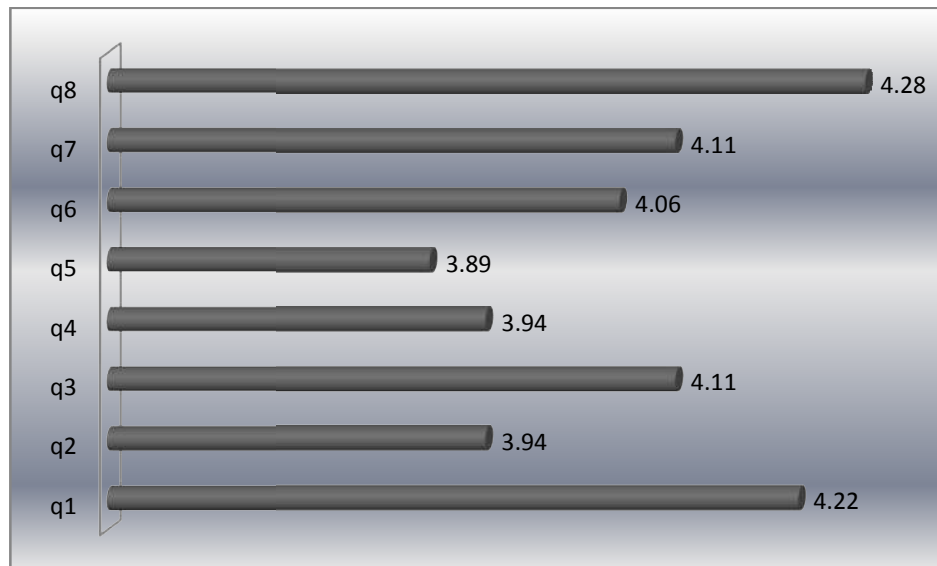
The eight key parameters depicted in table 30 and figure 30 with respect to the department “MA - English” reveals that students have a higher mean score value of more than four on all the eight parameters.

Table -31**Mean score comparison of Parameters for the Department “M.Com”**

Variables	N	Mean	Std. Deviation
1. How do you rate the course you are undergoing in terms of the content across different semesters	18	4.22	0.809
2. How do you perceive the availability of text and reference materials in the library	18	3.94	0.873
3. Express your opinion with regard to the relevance of the subjects included in your curriculum	18	4.11	0.832
4. State your opinion with regard to academic environment of the college for effective learning	18	3.94	1.110
5. Do you agree that the courses you study are latest and up to date	18	3.89	0.963
6. How do you rate the percentage of courses having focus on skill development and entrepreneurship	18	4.06	0.873
7. Mention the level of outcomes that you have attained from the course you have studied	18	4.11	0.832
8. How do you rate the components of your internal assessment?	18	4.28	0.826

Figure -31

Mean score comparison of Parameters for the Department “M.Com”



Interpretation:

The eight key parameters depicted in table 31 and figure 31 with respect to the department “M.Com” reveals that students have a higher mean score value of more than four on five parameters and a moderate value of more than 3.5 on three parameters

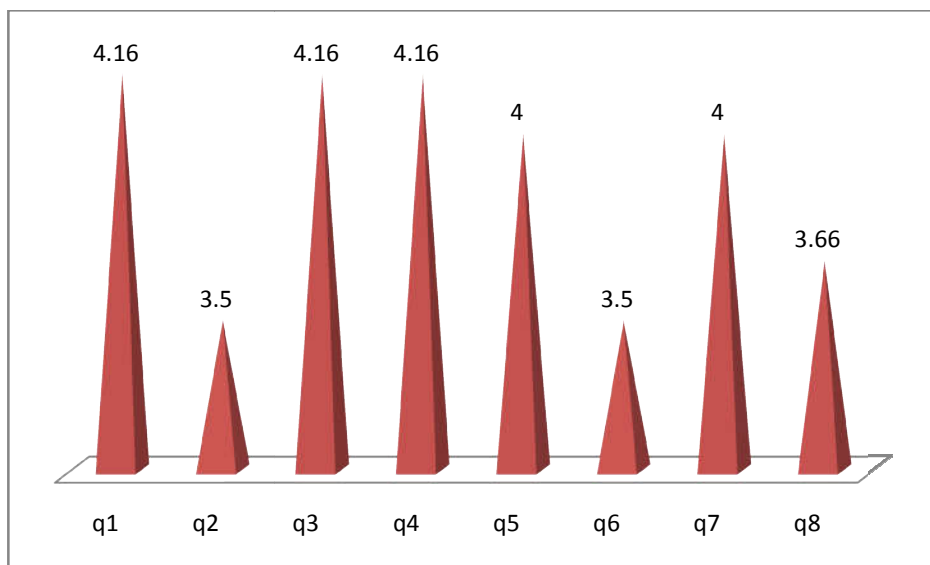
Table -32

Mean score comparison of Parameters for the Department “M.Sc Botany”

Variables	N	Mean	Std. Deviation
1. How do you rate the course you are undergoing in terms of the content across different semesters	6	4.16	.752
2. How do you perceive the availability of text and reference materials in the library	6	3.50	.547
3. Express your opinion with regard to the relevance of the subjects included in your curriculum	6	4.16	.752
4. State your opinion with regard to academic environment of the college for effective learning	6	4.16	1.169
5. Do you agree that the courses you study are latest and up to date	6	4.00	.632
6. How do you rate the percentage of courses having focus on skill development and entrepreneurship	6	3.50	.836
7. Mention the level of outcomes that you have attained from the course you have studied	6	4.00	.632
8. How do you rate the components of your internal assessment?	6	3.66	.516

Figure -32

Mean score comparison of Parameters for the Department “M.Sc Botany”



Interpretation:

The mean scores obtained for the eight key parameters with respect to the department “M.Sc Botany” reveals that students have a higher mean score value of more than four on five parameters. Moderate mean scores were found for the parameters “How do you perceive the availability of text and reference materials in the library” ($M = 3.50$), How do you rate the percentage of courses having focus on skill development and entrepreneurship ($M = 3.50$) and How do you rate the components of your internal assessment? ($M = 3.66$)

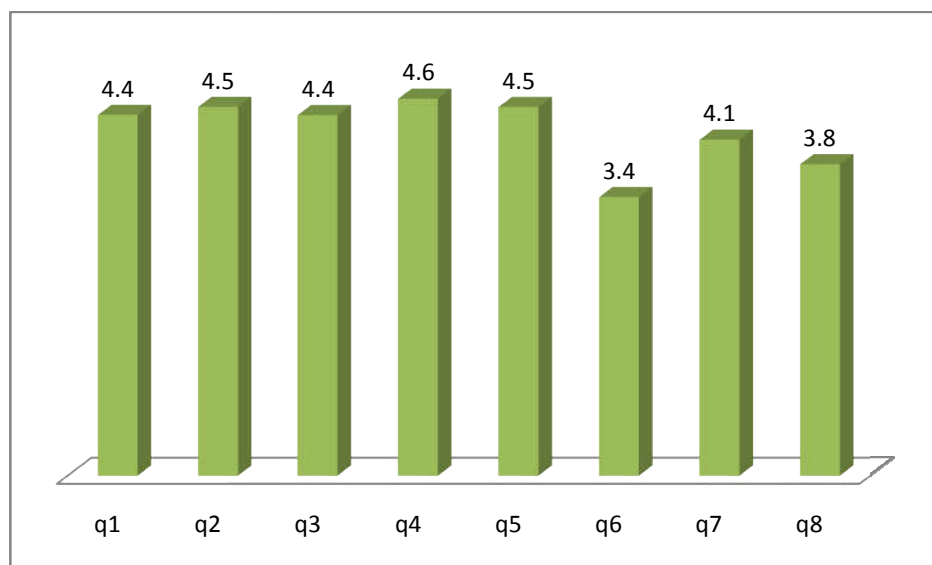
Table -33

Mean score comparison of Parameters for the Department “M.Sc Chemistry”

Variables	N	Mean	Std. Deviation
1. How do you rate the course you are undergoing in terms of the content across different semesters	10	4.40	0.699
2. How do you perceive the availability of text and reference materials in the library	10	4.50	0.527
3. Express your opinion with regard to the relevance of the subjects included in your curriculum	10	4.40	0.699
4. State your opinion with regard to academic environment of the college for effective learning	10	4.60	0.699
5. Do you agree that the courses you study are latest and up to date	10	4.50	0.527
6. How do you rate the percentage of courses having focus on skill development and entrepreneurship	10	3.40	0.843
7. Mention the level of outcomes that you have attained from the course you have studied	10	4.10	0.568
8. How do you rate the components of your internal assessment?	10	3.80	1.033

Figure -33

Mean score comparison of Parameters for the Department “M.Sc Chemistry”



Interpretation:

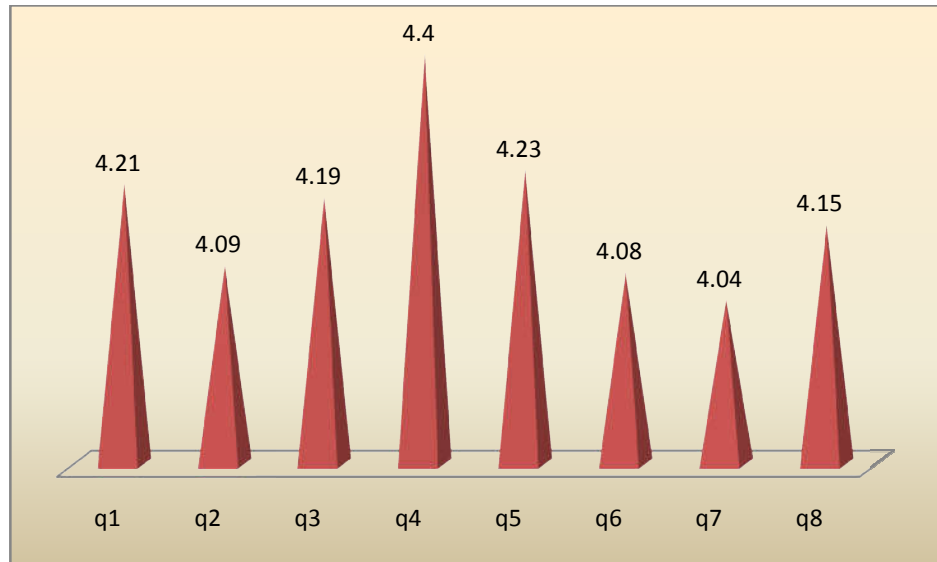
Based on the mean comparison of the eight key parameters with respect to the department “M.Sc Chemistry” it was found that students have a higher mean score value of more than four on six parameters and a lower score of less than 3.5 on one parameter “How do you rate the percentage of courses having focus on skill development and entrepreneurship”.

Table -34**Mean score comparison of Parameters for the Department “M.Sc Mathematics”**

Variables	N	Mean	Std. Deviation
1. How do you rate the course you are undergoing in terms of the content across different semesters	53	4.21	0.567
2. How do you perceive the availability of text and reference materials in the library	53	4.09	0.628
3. Express your opinion with regard to the relevance of the subjects included in your curriculum	53	4.19	0.622
4. State your opinion with regard to academic environment of the college for effective learning	53	4.40	0.743
5. Do you agree that the courses you study are latest and up to date	53	4.23	0.542
6. How do you rate the percentage of courses having focus on skill development and entrepreneurship	53	4.08	0.781
7. Mention the level of outcomes that you have attained from the course you have studied	53	4.04	0.619
8. How do you rate the components of your internal assessment?	53	4.15	0.601

Figure -34

Mean score comparison of Parameters for the Department “M.Sc Mathematics”



Interpretation:

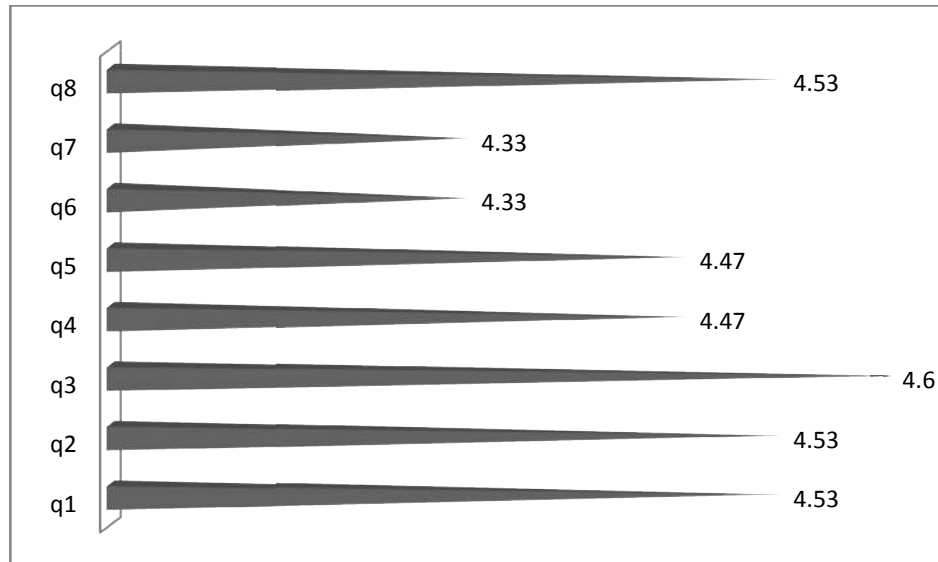
The mean scores obtained for the eight key parameters with respect to the department “M.Sc Mathematics” reveals that students have a higher mean score value of more than four on all the eight parameters.

Table -35**Mean score comparison of Parameters for the Department “M.Sc Microbiology”**

Variables	N	Mean	Std. Deviation
1. How do you rate the course you are undergoing in terms of the content across different semesters	15	4.53	0.516
2. How do you perceive the availability of text and reference materials in the library	15	4.53	0.640
3. Express your opinion with regard to the relevance of the subjects included in your curriculum	15	4.60	0.633
4. State your opinion with regard to academic environment of the college for effective learning	15	4.47	0.640
5. Do you agree that the courses you study are latest and up to date	15	4.47	0.516
6. How do you rate the percentage of courses having focus on skill development and entrepreneurship	15	4.33	0.817
7. Mention the level of outcomes that you have attained from the course you have studied	15	4.33	0.724
8. How do you rate the components of your internal assessment?	15	4.53	0.640

Figure -35

Mean score comparison of Parameters for the Department “M.Sc Microbiology”



Interpretation:

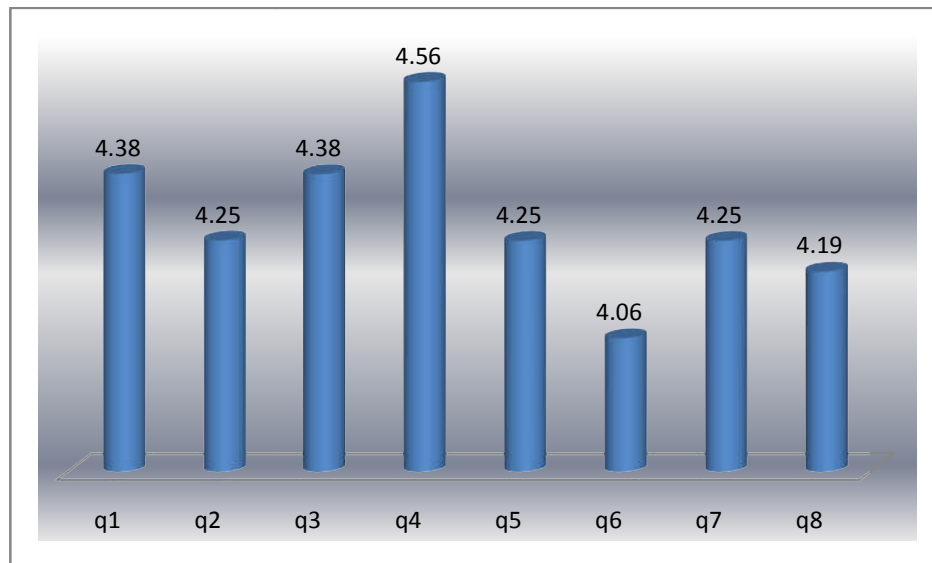
Mean score comparison of the eight key parameters with respect to the department “M.Sc Microbiology” reveals that students have a higher mean score value of more than four on all the eight parameters.

Table -36**Mean score comparison of Parameters for the Department “M.Sc Physics”**

Variables	N	Mean	Std. Deviation
1. How do you rate the course you are undergoing in terms of the content across different semesters	16	4.38	0.619
2. How do you perceive the availability of text and reference materials in the library	16	4.25	0.856
3. Express your opinion with regard to the relevance of the subjects included in your curriculum	16	4.38	0.619
4. State your opinion with regard to academic environment of the college for effective learning	16	4.56	0.727
5. Do you agree that the courses you study are latest and up to date	16	4.25	0.683
6. How do you rate the percentage of courses having focus on skill development and entrepreneurship	16	4.06	0.998
7. Mention the level of outcomes that you have attained from the course you have studied	16	4.25	0.775
8. How do you rate the components of your internal assessment?	16	4.19	0.655

Figure -36

Mean score comparison of Parameters for the Department “M.Sc Physics”



Interpretation:

The eight key parameters depicted in table 36 and figure 36 with respect to the department “M.Sc Physics” reveals that students have a higher mean score value of more than four on all the eight parameters.

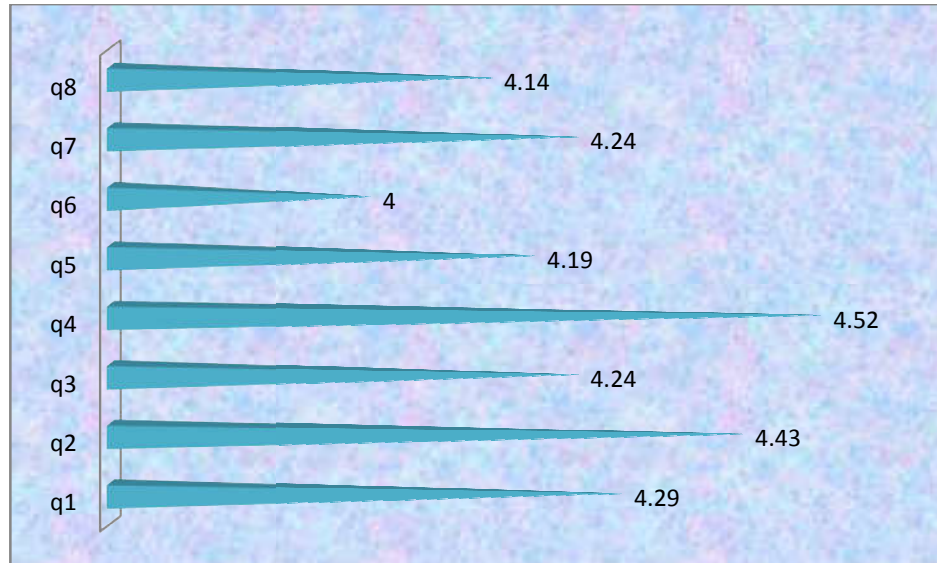
Table -37

Mean score comparison of Parameters for the Department “M.Sc Zoology”

Variables	N	Mean	Std. Deviation
1. How do you rate the course you are undergoing in terms of the content across different semesters	21	4.29	0.717
2. How do you perceive the availability of text and reference materials in the library	21	4.43	0.507
3. Express your opinion with regard to the relevance of the subjects included in your curriculum	21	4.24	0.436
4. State your opinion with regard to academic environment of the college for effective learning	21	4.52	0.512
5. Do you agree that the courses you study are latest and up to date	21	4.19	0.402
6. How do you rate the percentage of courses having focus on skill development and entrepreneurship	21	4.00	0.775
7. Mention the level of outcomes that you have attained from the course you have studied	21	4.24	0.539
8. How do you rate the components of your internal assessment?	21	4.14	0.655

Figure -37

Mean score comparison of Parameters for the Department “M.Sc Zoology”



Interpretation:

Mean score comparison of the eight key parameters with respect to the department “M.Sc Zoology” reveals that students have a higher mean score value of more than four on all the eight parameters.

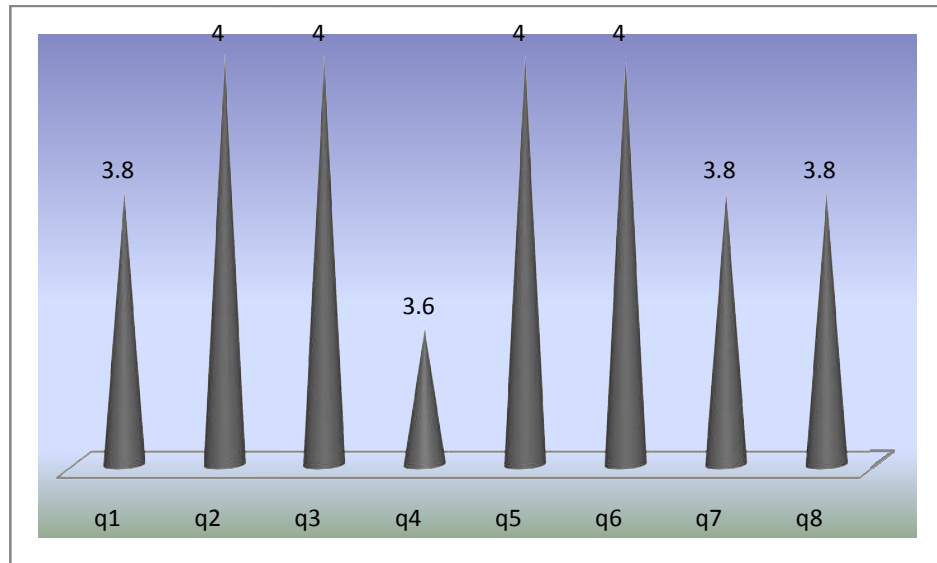
Table -38

Mean score comparison of Parameters for the Department “M.A Social work”

Variables	N	Mean	Std. Deviation
1. How do you rate the course you are undergoing in terms of the content across different semesters	5	3.80	0.447
2. How do you perceive the availability of text and reference materials in the library	5	4.00	0.707
3. Express your opinion with regard to the relevance of the subjects included in your curriculum	5	4.00	0.707
4. State your opinion with regard to academic environment of the college for effective learning	5	3.60	0.548
5. Do you agree that the courses you study are latest and up to date	5	4.00	0.707
6. How do you rate the percentage of courses having focus on skill development and entrepreneurship	5	4.00	1.000
7. Mention the level of outcomes that you have attained from the course you have studied	5	3.80	0.837
8. How do you rate the components of your internal assessment?	5	3.80	0.447

Figure -38

Mean score comparison of Parameters for the Department “M.A Social work”



Interpretation:

Table 38 and figure 38 reveals the mean scores of eight key parameters with respect to the department “M.A Social work” reveals that students have a higher mean score value of more than four on four parameters and a moderate value of more than 3.5 on four parameters

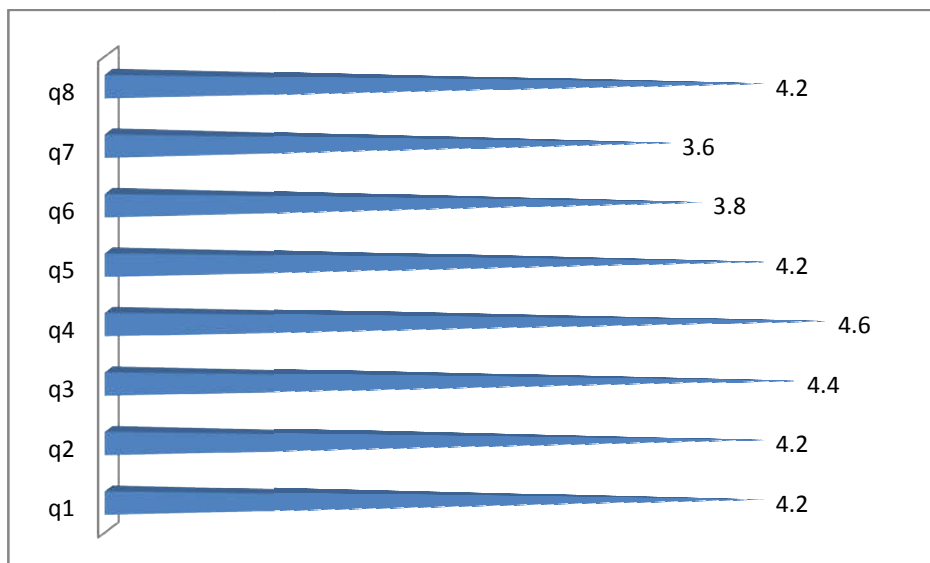
Table -39

Mean score comparison of Parameters for the Department “M.A Tamil”

Variables	N	Mean	Std. Deviation
1. How do you rate the course you are undergoing in terms of the content across different semesters	5	4.20	.836
2. How do you perceive the availability of text and reference materials in the library	5	4.20	.836
3. Express your opinion with regard to the relevance of the subjects included in your curriculum	5	4.40	.547
4. State your opinion with regard to academic environment of the college for effective learning	5	4.60	.894
5. Do you agree that the courses you study are latest and up to date	5	4.20	.836
6. How do you rate the percentage of courses having focus on skill development and entrepreneurship	5	3.80	1.095
7. Mention the level of outcomes that you have attained from the course you have studied	5	3.60	.547
8. How do you rate the components of your internal assessment?	5	4.20	.836

Figure -39

Mean score comparison of Parameters for the Department “M.A Tamil”



Interpretation:

The mean score values with respect to the department “M.A Tamil” indicate that students reported a higher mean score of more than four for six out of eight parameters. Moderate mean scores were found for the parameters “Mention the level of outcomes that you have attained from the course you have studied” ($M = 3.60$) and How do you rate the percentage of courses having focus on skill development and entrepreneurship ($M = 3.80$).

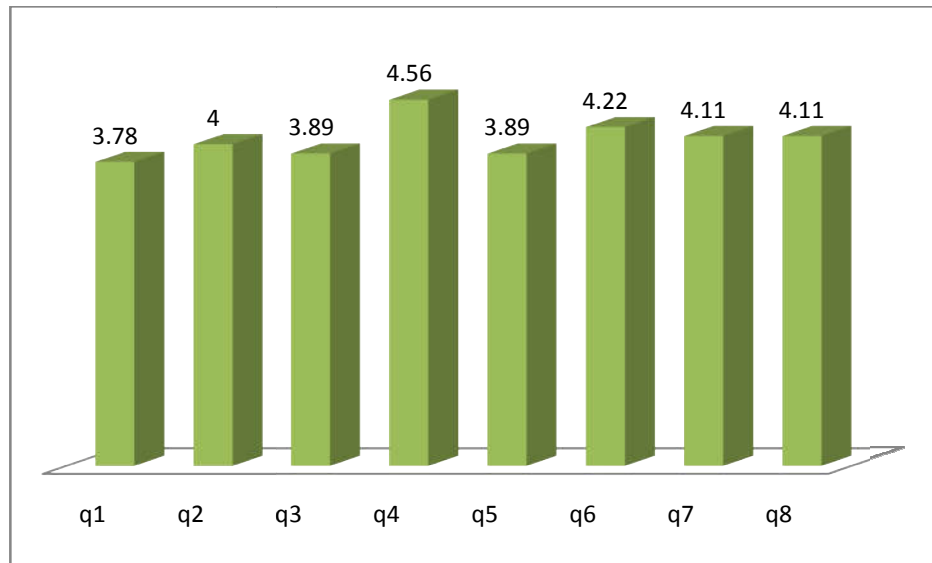
Table -40

Mean score comparison of Parameters for the Department “MCA”

Variables	N	Mean	Std. Deviation
1. How do you rate the course you are undergoing in terms of the content across different semesters	9	3.78	0.667
2. How do you perceive the availability of text and reference materials in the library	9	4.00	0.707
3. Express your opinion with regard to the relevance of the subjects included in your curriculum	9	3.89	0.782
4. State your opinion with regard to academic environment of the college for effective learning	9	4.56	0.527
5. Do you agree that the courses you study are latest and up to date	9	3.89	0.928
6. How do you rate the percentage of courses having focus on skill development and entrepreneurship	9	4.22	0.667
7. Mention the level of outcomes that you have attained from the course you have studied	9	4.11	0.601
8. How do you rate the components of your internal assessment?	9	4.11	0.601

Figure -40

Mean score comparison of Parameters for the Department “MCA”



Interpretation:

The mean scores obtained on the eight key parameters with respect to the department “MCA” reveals that students have a higher mean score value of more than four on five parameters and a moderate value of more than 3.5 on three parameters

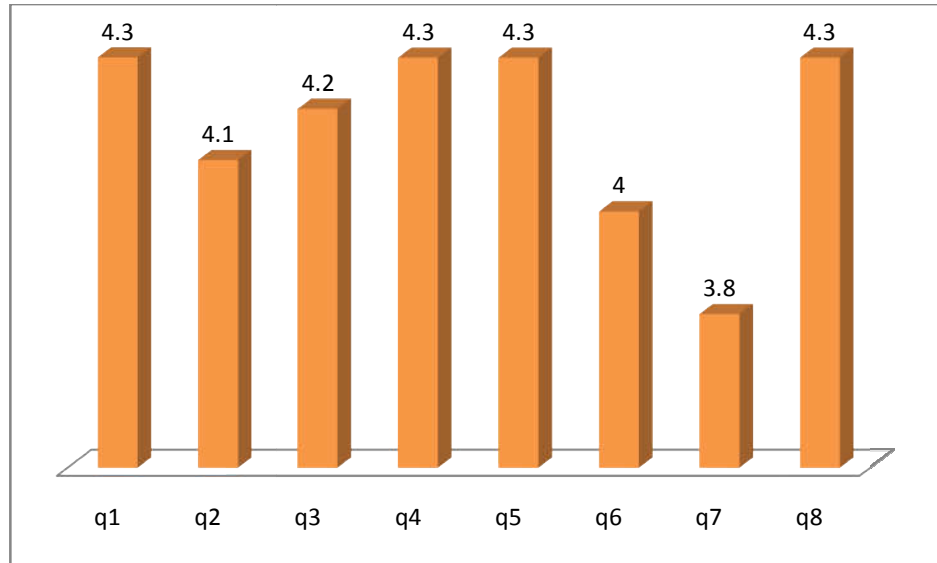
Table -41

Mean score comparison of Parameters for the Department “M.Sc Data science”

Variables	N	Mean	Std. Deviation
1. How do you rate the course you are undergoing in terms of the content across different semesters	10	4.30	0.675
2. How do you perceive the availability of text and reference materials in the library	10	4.10	0.568
3. Express your opinion with regard to the relevance of the subjects included in your curriculum	10	4.20	0.633
4. State your opinion with regard to academic environment of the college for effective learning	10	4.30	0.675
5. Do you agree that the courses you study are latest and up to date	10	4.30	0.483
6. How do you rate the percentage of courses having focus on skill development and entrepreneurship	10	4.00	0.667
7. Mention the level of outcomes that you have attained from the course you have studied	10	3.80	0.633
8. How do you rate the components of your internal assessment?	10	4.30	0.483

Figure -41

Mean score comparison of Parameters for the Department “M.Sc Data science”



Interpretation:

The mean scores obtained on the eight key parameters with respect to the department “M.Sc Data science” reveals that students have a higher mean score value of more than four on seven parameters and a moderate value of more than 3.5 on one parameter

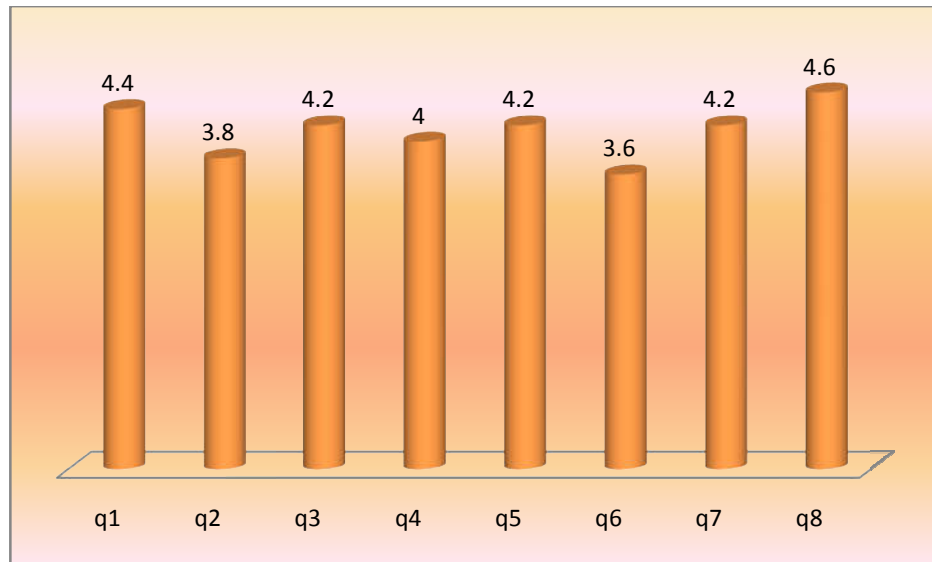
Table -42

Mean score comparison of Parameters for the Department “Master of Social work”

Variables	N	Mean	Std. Deviation
1. How do you rate the course you are undergoing in terms of the content across different semesters	5	4.40	0.548
2. How do you perceive the availability of text and reference materials in the library	5	3.80	0.447
3. Express your opinion with regard to the relevance of the subjects included in your curriculum	5	4.20	0.447
4. State your opinion with regard to academic environment of the college for effective learning	5	4.00	1.225
5. Do you agree that the courses you study are latest and up to date	5	4.20	0.447
6. How do you rate the percentage of courses having focus on skill development and entrepreneurship	5	3.60	0.548
7. Mention the level of outcomes that you have attained from the course you have studied	5	4.20	0.837
8. How do you rate the components of your internal assessment?	5	4.60	0.548

Figure -42

Mean score comparison of Parameters for the Department - – “Master of Social work”



Interpretation:

The eight key parameters in table 42 and figure 42 with respect to the department “Master of Social work” reveals that students have a higher mean score value of more than four on six parameters and a moderate value of more than 3.5 on two parameters

Student Feedback Report (2020 – 2021) – Satellite Campus

For the academic year 2020 – 21 students' feedback has been collected from UG and PG students in the satellite campus on eight key parameters through Google form. The key parameters are analysed with mean comparison across each department. The results are displayed in the following tables and figures.

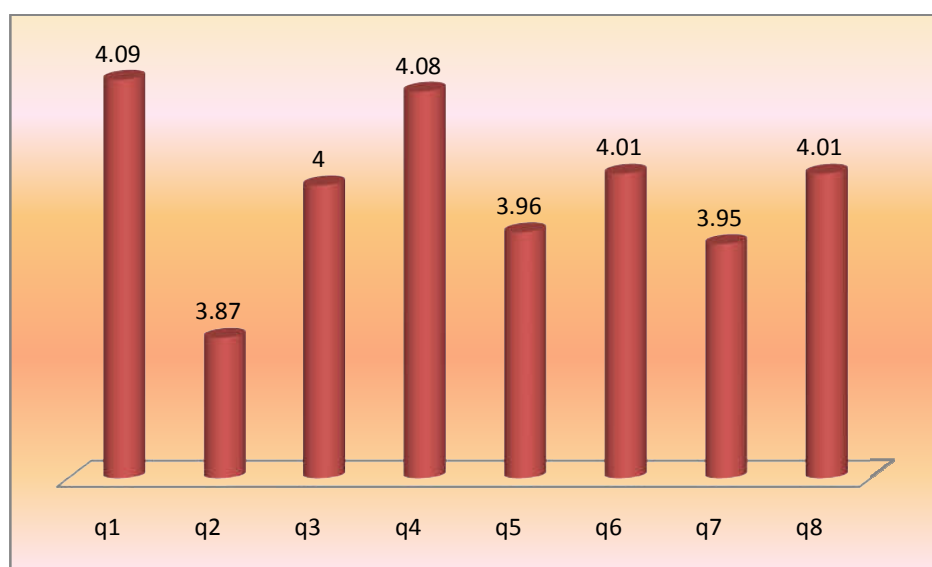
Table -1

Mean score comparison of Parameters across all Departments

Parameters	N	Mean	Std. Deviation
1. How do you rate the course you are undergoing in terms of the content across different semesters	188	4.09	.751
2. How do you perceive the availability of text and reference materials in the library	188	3.87	.880
3. Express your opinion with regard to the relevance of the subjects included in your curriculum	188	4.00	.770
4. State your opinion with regard to academic environment of the college for effective learning	188	4.08	.918
5. Do you agree that the courses you study are latest and up to date	188	3.96	.855
6. How do you rate the percentage of courses having focus on skill development and entrepreneurship	188	4.01	.823
7. Mention the level of outcomes that you have attained from the course you have studied	188	3.95	.809
8. How do you rate the components of your internal assessment?	188	4.01	.817

Figure - 1

Mean score comparison of Parameters across all Departments



Interpretation:

Mean score comparison of the eight key parameters with respect to the all the departments reveals that students have a higher mean score value of more than four on five parameters and a moderate score of above 3.5 on three parameters.

Table -2

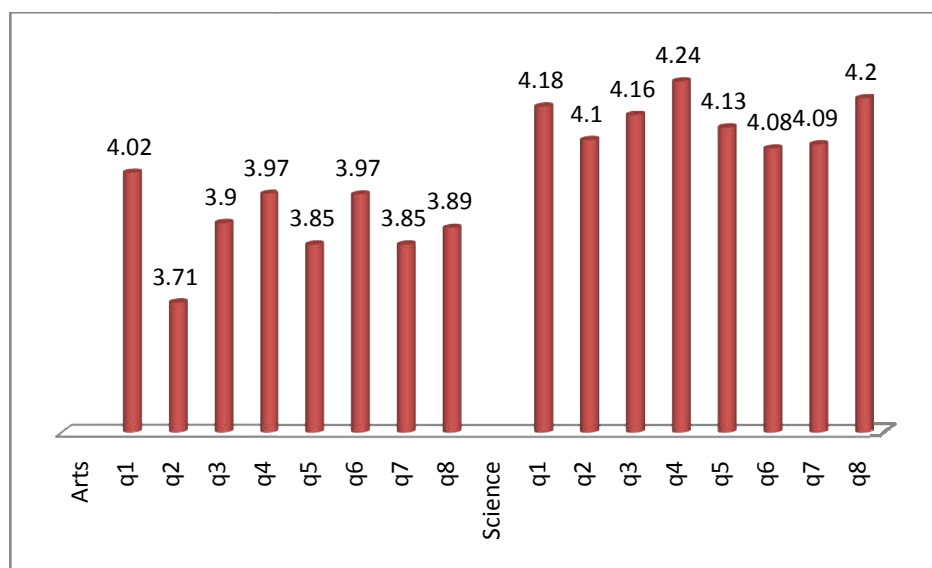
Mean score comparison of Parameters across Arts and Science Students

Parameters		N	Mean	Std. Deviation
Arts	1) How do you rate the course you are undergoing in terms of the content across different semesters?	113	4.02	.828
	2) How do you perceive the availability of text and reference materials in the library?	113	3.71	.958
	3) Express your opinion with regard to the relevance of the subjects included in your curriculum	113	3.90	.855
	4) State your opinion with regard to academic environment of the college for effective learning	113	3.97	1.013
	5) Do you agree that the courses you study are latest and up to date?	113	3.85	.956
	6) How do you rate the percentage of courses having focus on skill development and entrepreneurship?	113	3.97	.901
	7) Mention the level of outcomes that you have attained from the course you have studied	113	3.85	.885
	8) How do you rate the components of your internal assessment?	113	3.89	.890
Science	1) How do you rate the course you are undergoing in terms of the content across different semesters?	75	4.18	.608
	2) How do you perceive the availability of text and reference materials in the library?	75	4.10	.689
	3) Express your opinion with regard to the relevance of the subjects included in your curriculum	75	4.16	.593

4) State your opinion with regard to academic environment of the college for effective learning	75	4.24	.732
5) Do you agree that the courses you study are latest and up to date?	75	4.13	.643
6) How do you rate the percentage of courses having focus on skill development and entrepreneurship?	75	4.08	.692
7) Mention the level of outcomes that you have attained from the course you have studied	75	4.09	.661
8) How do you rate the components of your internal assessment?	75	4.20	.657

Figure -2

Mean score comparison of Parameters across Arts and Science Students



Interpretation:

Mean score comparison of the eight key parameters across the Arts and Science stream reveals that students studying in science stream displayed a higher mean score of more than 4 on all the parameters.

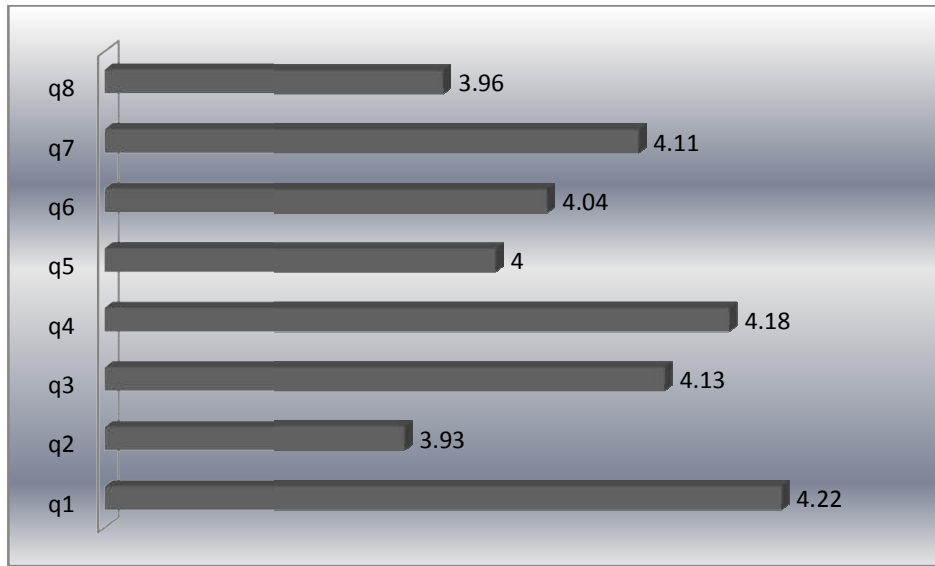
Table - 3

Mean score comparison of Parameters for the Department – “B.Com”

Parameters	N	Mean	Std. Deviation
1. How do you rate the course you are undergoing in terms of the content across different semesters	45	4.22	0.876
2. How do you perceive the availability of text and reference materials in the library	45	3.93	0.939
3. Express your opinion with regard to the relevance of the subjects included in your curriculum	45	4.13	0.869
4. State your opinion with regard to academic environment of the college for effective learning	45	4.18	0.834
5. Do you agree that the courses you study are latest and up to date	45	4.00	1.000
6. How do you rate the percentage of courses having focus on skill development and entrepreneurship	45	4.04	0.976
7. Mention the level of outcomes that you have attained from the course you have studied	45	4.11	0.859
8. How do you rate the components of your internal assessment?	45	3.96	0.928

Figure -3

Mean score comparison of Parameters for the Department – “B.Com”



Interpretation:

The mean scores obtained for the eight key parameters with respect to the department “B.Com” reveals that students have a higher mean score value of more than four on six parameters and a moderate value of more than 3.5 on two parameters.

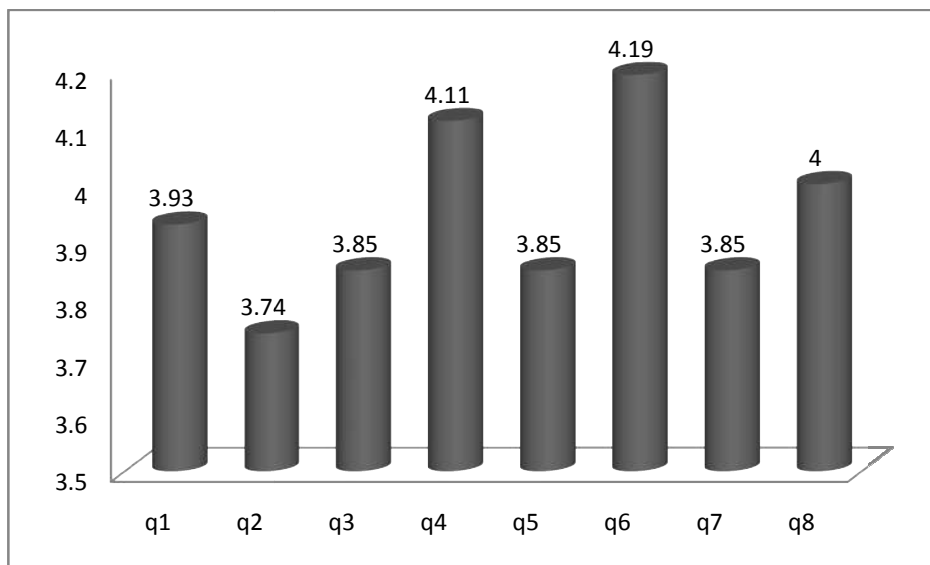
Table - 4

Mean score comparison of Parameters for the Department – “B.Com CA”

Parameters	N	Mean	Std. Deviation
1. How do you rate the course you are undergoing in terms of the content across different semesters	27	3.93	0.550
2. How do you perceive the availability of text and reference materials in the library	27	3.74	0.594
3. Express your opinion with regard to the relevance of the subjects included in your curriculum	27	3.85	0.534
4. State your opinion with regard to academic environment of the college for effective learning	27	4.11	0.698
5. Do you agree that the courses you study are latest and up to date	27	3.85	0.602
6. How do you rate the percentage of courses having focus on skill development and entrepreneurship	27	4.19	0.557
7. Mention the level of outcomes that you have attained from the course you have studied	27	3.85	0.534
8. How do you rate the components of your internal assessment?	27	4.00	0.555

Figure -4

Mean score comparison of Parameters for the Department – “B.Com CA”



Interpretation:

Table 4 and figure 4 reveals the mean scores of eight key parameters with respect to the department “B.Com CA”. Test results reveals that students have a higher mean score value of more than four on three parameters and a moderate value of more than 3.5 on five parameters

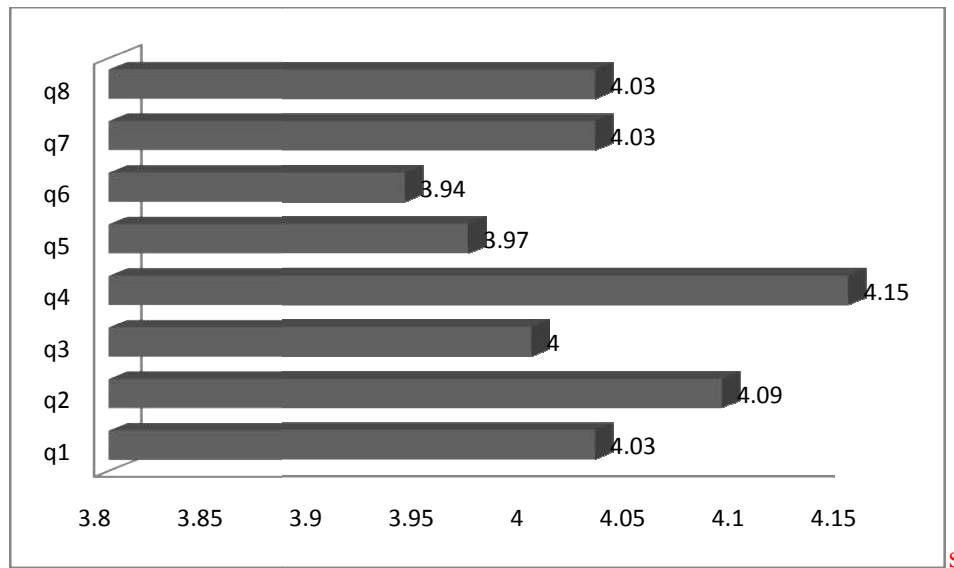
Table - 5

Mean score comparison of Parameters for the Department “B.Sc Computer Science”

Parameters	N	Mean	Std. Deviation
1. How do you rate the course you are undergoing in terms of the content across different semesters	34	4.03	0.521
2. How do you perceive the availability of text and reference materials in the library	34	4.09	0.621
3. Express your opinion with regard to the relevance of the subjects included in your curriculum	34	4.00	0.426
4. State your opinion with regard to academic environment of the college for effective learning	34	4.15	0.702
5. Do you agree that the courses you study are latest and up to date	34	3.97	0.674
6. How do you rate the percentage of courses having focus on skill development and entrepreneurship	34	3.94	0.489
7. Mention the level of outcomes that you have attained from the course you have studied	34	4.03	0.577
8. How do you rate the components of your internal assessment?	34	4.03	0.717

Figure - 5

Mean score comparison of Parameters for the Department – “B.Sc Computer Science”



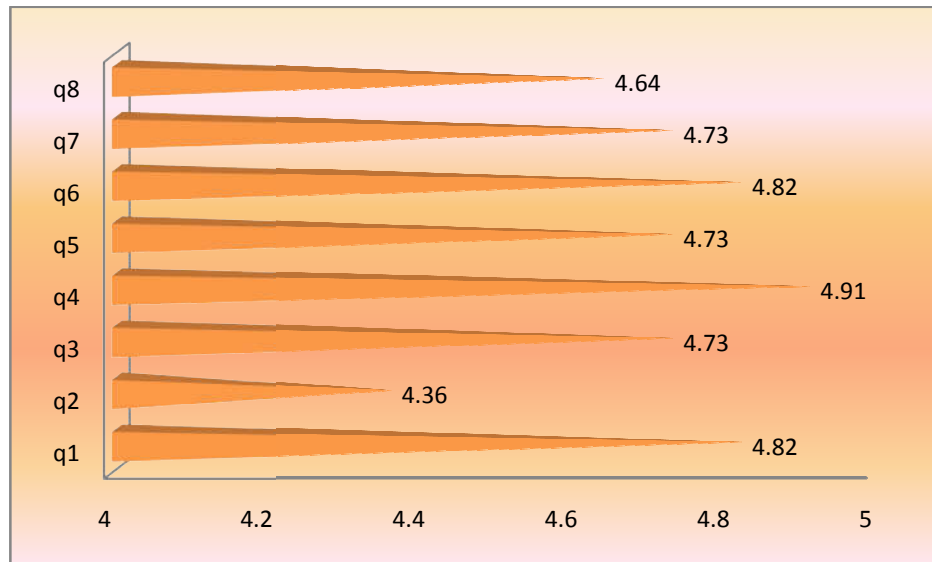
Interpretation:

The eight key parameters depicted in table 5 and figure 5 with respect to the department “B.Sc Computer Science” reveals that students have a higher mean score value of more than four on six parameters and a moderate value of more than 3.5 on two parameters

Table -6**Mean score comparison of Parameters for the Department – “B.Sc Data science”**

Parameters	N	Mean	Std. Deviation
1. How do you rate the course you are undergoing in terms of the content across different semesters	11	4.82	0.405
2. How do you perceive the availability of text and reference materials in the library	11	4.36	0.924
3. Express your opinion with regard to the relevance of the subjects included in your curriculum	11	4.73	0.647
4. State your opinion with regard to academic environment of the college for effective learning	11	4.91	0.302
5. Do you agree that the courses you study are latest and up to date	11	4.73	0.467
6. How do you rate the percentage of courses having focus on skill development and entrepreneurship	11	4.82	0.405
7. Mention the level of outcomes that you have attained from the course you have studied	11	4.73	0.467
8. How do you rate the components of your internal assessment?	11	4.64	0.505

Figure -6
Mean score comparison of Parameters for the Department – “B.Sc Data science”



Interpretation:

Mean score comparison of the eight key parameters with respect to the department “B.Sc Data science” reveals that students have a higher mean score value of more than four on all the eight parameters.

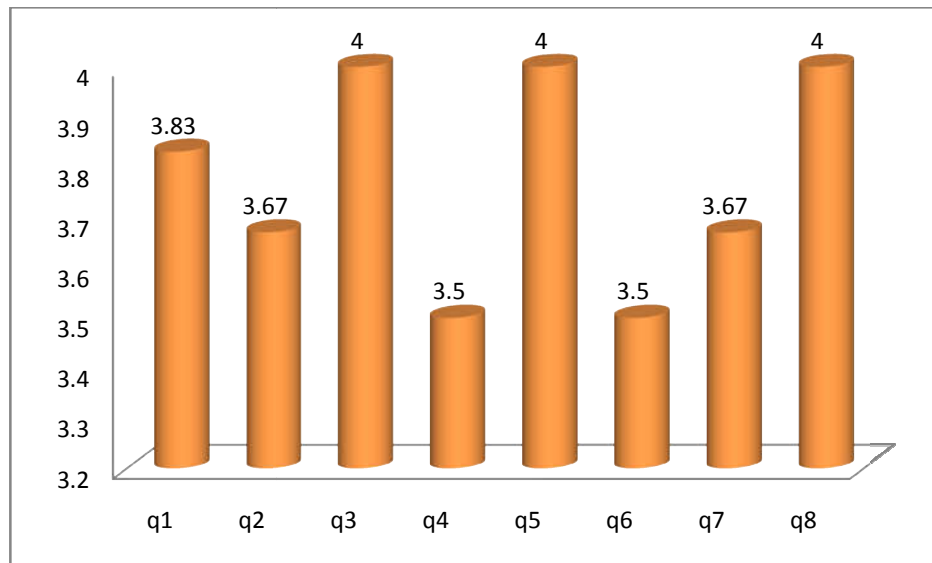
Table -7

Mean score comparison of Parameters for the Department – “B.Sc Mathematics”

Parameters	N	Mean	Std. Deviation
1. How do you rate the course you are undergoing in terms of the content across different semesters	6	3.83	0.408
2. How do you perceive the availability of text and reference materials in the library	6	3.67	0.817
3. Express your opinion with regard to the relevance of the subjects included in your curriculum	6	4.00	0.633
4. State your opinion with regard to academic environment of the college for effective learning	6	3.50	0.837
5. Do you agree that the courses you study are latest and up to date	6	4.00	0.000
6. How do you rate the percentage of courses having focus on skill development and entrepreneurship	6	3.50	1.049
7. Mention the level of outcomes that you have attained from the course you have studied	6	3.67	0.817
8. How do you rate the components of your internal assessment?	6	4.00	0.633

Figure -7

Mean score comparison of Parameters for the Department – “B.Sc Mathematics”



Interpretation:

The mean scores obtained for the eight key parameters with respect to the department “B.Sc Mathematics” reveals that students have a higher mean score value of four on three parameters and a moderate score of above 3.5 on five parameters.

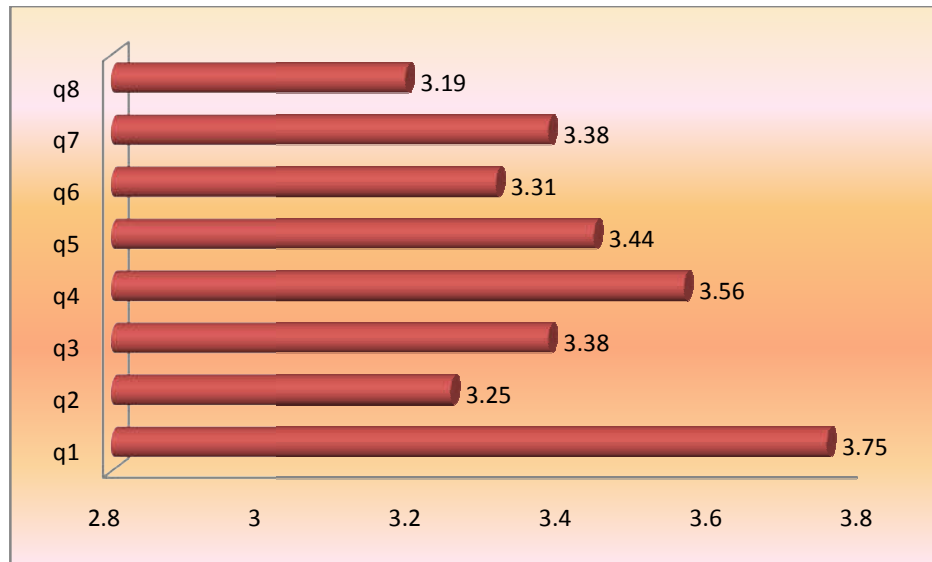
Table -8

Mean score comparison of Parameters for the Department – “B.A English”

Parameters	N	Mean	Std. Deviation
1. How do you rate the course you are undergoing in terms of the content across different semesters	16	3.75	1.183
2. How do you perceive the availability of text and reference materials in the library	16	3.25	1.000
3. Express your opinion with regard to the relevance of the subjects included in your curriculum	16	3.38	1.088
4. State your opinion with regard to academic environment of the college for effective learning	16	3.56	1.459
5. Do you agree that the courses you study are latest and up to date	16	3.44	1.263
6. How do you rate the percentage of courses having focus on skill development and entrepreneurship	16	3.31	1.138
7. Mention the level of outcomes that you have attained from the course you have studied	16	3.38	1.025
8. How do you rate the components of your internal assessment?	16	3.19	1.223

Figure -8

Mean score comparison of Parameters for the Department – “B.A English”



Interpretation:

The eight key parameters depicted in table 8 and figure 8 with respect to the department “B.A English” reveals that students found to have a lower mean score value of less than 3.5 on six out of eight parameters.

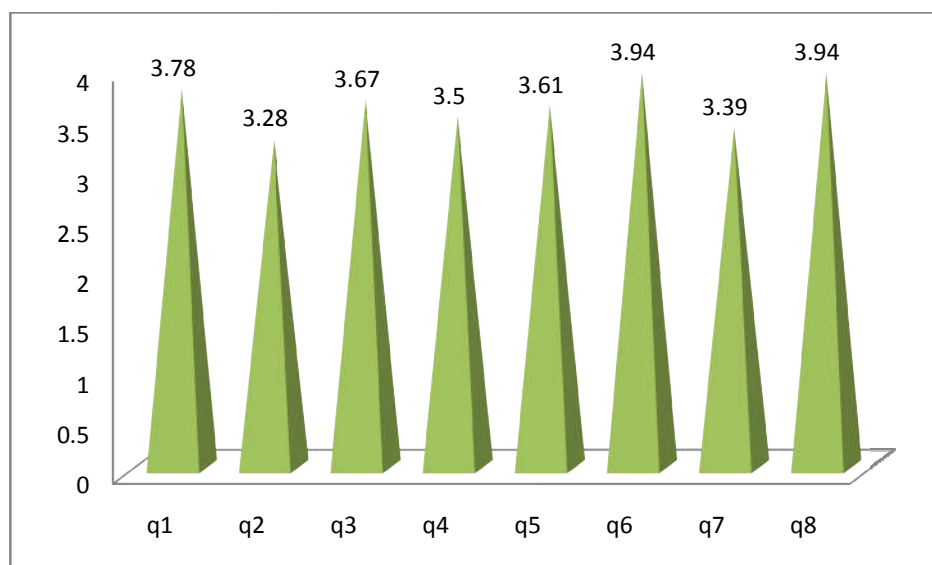
Table -9

Mean score comparison of Parameters for the Department – “BBA”

Parameters	N	Mean	Std. Deviation
1. How do you rate the course you are undergoing in terms of the content across different semesters	18	3.78	0.647
2. How do you perceive the availability of text and reference materials in the library	18	3.28	1.179
3. Express your opinion with regard to the relevance of the subjects included in your curriculum	18	3.67	0.840
4. State your opinion with regard to academic environment of the college for effective learning	18	3.50	1.295
5. Do you agree that the courses you study are latest and up to date	18	3.61	0.979
6. How do you rate the percentage of courses having focus on skill development and entrepreneurship	18	3.94	0.725
7. Mention the level of outcomes that you have attained from the course you have studied	18	3.39	0.979
8. How do you rate the components of your internal assessment?	18	3.94	0.639

Figure -9

Mean score comparison of Parameters for the Department – “BBA”



Interpretation:

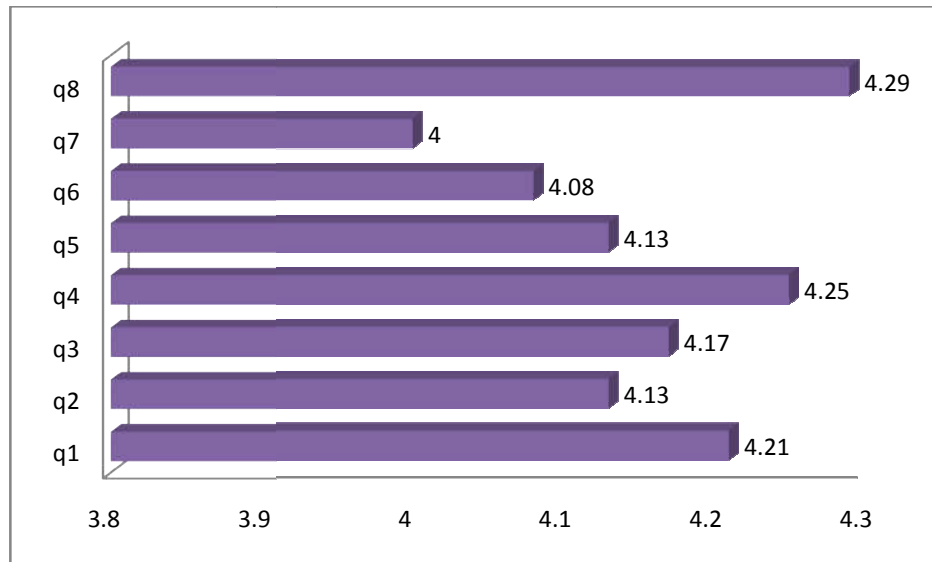
Mean score comparison of the eight key parameters with respect to the department “BBA” reveals that students displayed a mean score value of less than 3.5 on two parameters., which are “How do you perceive the availability of text and reference materials in the library” (M = 3.28) and “Mention the level of outcomes that you have attained from the course you have studied” (M = 3.39)

Table -10

Mean score comparison of Parameters for the Department – “BCA”

Parameters	N	Mean	Std. Deviation
1. How do you rate the course you are undergoing in terms of the content across different semesters	24	4.21	0.658
2. How do you perceive the availability of text and reference materials in the library	24	4.13	0.612
3. Express your opinion with regard to the relevance of the subjects included in your curriculum	24	4.17	0.637
4. State your opinion with regard to academic environment of the college for effective learning	24	4.25	0.676
5. Do you agree that the courses you study are latest and up to date	24	4.13	0.612
6. How do you rate the percentage of courses having focus on skill development and entrepreneurship	24	4.08	0.717
7. Mention the level of outcomes that you have attained from the course you have studied	24	4.00	0.659
8. How do you rate the components of your internal assessment?	24	4.29	0.550

Figure -10
Mean score comparison of Parameters for the Department – “BCA”



Interpretation:

Table 10 and figure 10 reveals the mean scores of eight key parameters with respect to the department “BCA” reveals that students have a higher mean score value of more than four on all the eight parameters.

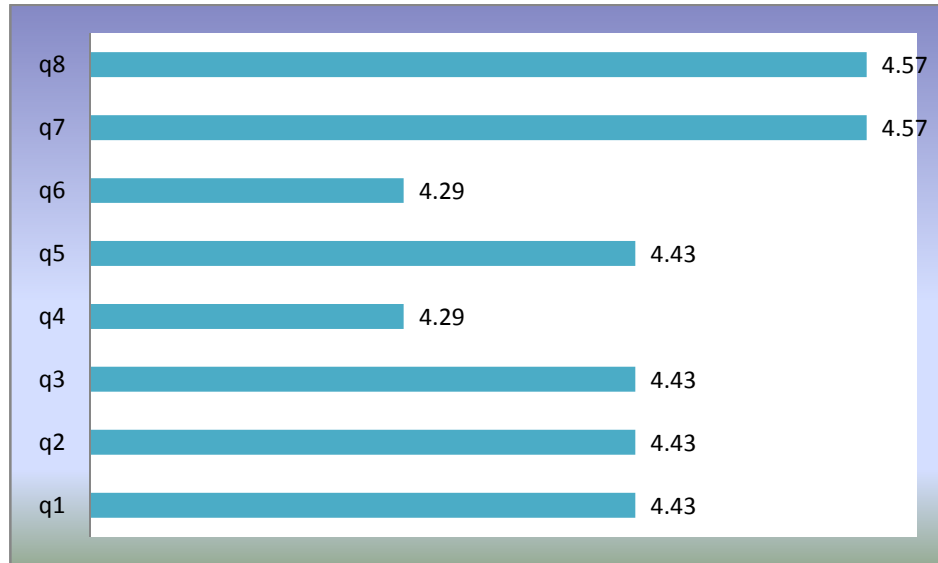
Table -11

Mean score comparison of Parameters for the Department – “MBA”

Parameters	N	Mean	Std. Deviation
1. How do you rate the course you are undergoing in terms of the content across different semesters	7	4.43	0.535
2. How do you perceive the availability of text and reference materials in the library	7	4.43	0.787
3. Express your opinion with regard to the relevance of the subjects included in your curriculum	7	4.43	0.535
4. State your opinion with regard to academic environment of the college for effective learning	7	4.29	0.488
5. Do you agree that the courses you study are latest and up to date	7	4.43	0.535
6. How do you rate the percentage of courses having focus on skill development and entrepreneurship	7	4.29	0.756
7. Mention the level of outcomes that you have attained from the course you have studied	7	4.57	0.535
8. How do you rate the components of your internal assessment?	7	4.57	0.535

Figure -11

Mean score comparison of Parameters for the Department – “MBA”



Interpretation:

The eight key parameters in table 11 and figure 11 with respect to the department “MBA” reveals that students have a higher mean score value of more than four on all the eight parameters.



The American College, Madurai
NAAC – Criterion I Curricular Aspects
Teacher's Feedback Report (2020 – 2021)

For the academic year 2020 – 21 teacher's feedback on curriculum has been collected from faculty in the main campus and satellite campus on twelve key parameters on a five point scale ranging from strongly agree to strongly disagree. Faculty being the most important person in curriculum design, implementation and development, feedback of faculty on curricular aspects are of utmost importance. The key parameters are analysed with mean score comparison. The results are displayed in the following table and figure. The key parameters are

1. The curriculum adopted by the college is contemporary and industry relevant
2. The curriculum is well balanced between theory and application
3. Teachers enjoy autonomy to design and revise the syllabus periodically
4. Program outcomes, Program specific outcomes and Course outcomes are well defined
5. The course / syllabi taught by me increases my knowledge and interest in the subject area
6. Curriculum has high academic flexibility
7. Course contents fulfil the needs of the students
8. The present curriculum enhances the employability of the students
9. Curriculum has focus on skill development
10. Aims and objectives of the syllabi are defined clearly to Teachers and Students
11. The course/program of studies carries sufficient number of optional papers.
12. The contents of the course have been presented from simple to complex form

Dr. M. DAVAMANI CHRISTOBER
Principal & Secretary
The American College
Madurai-625 002

Table -1

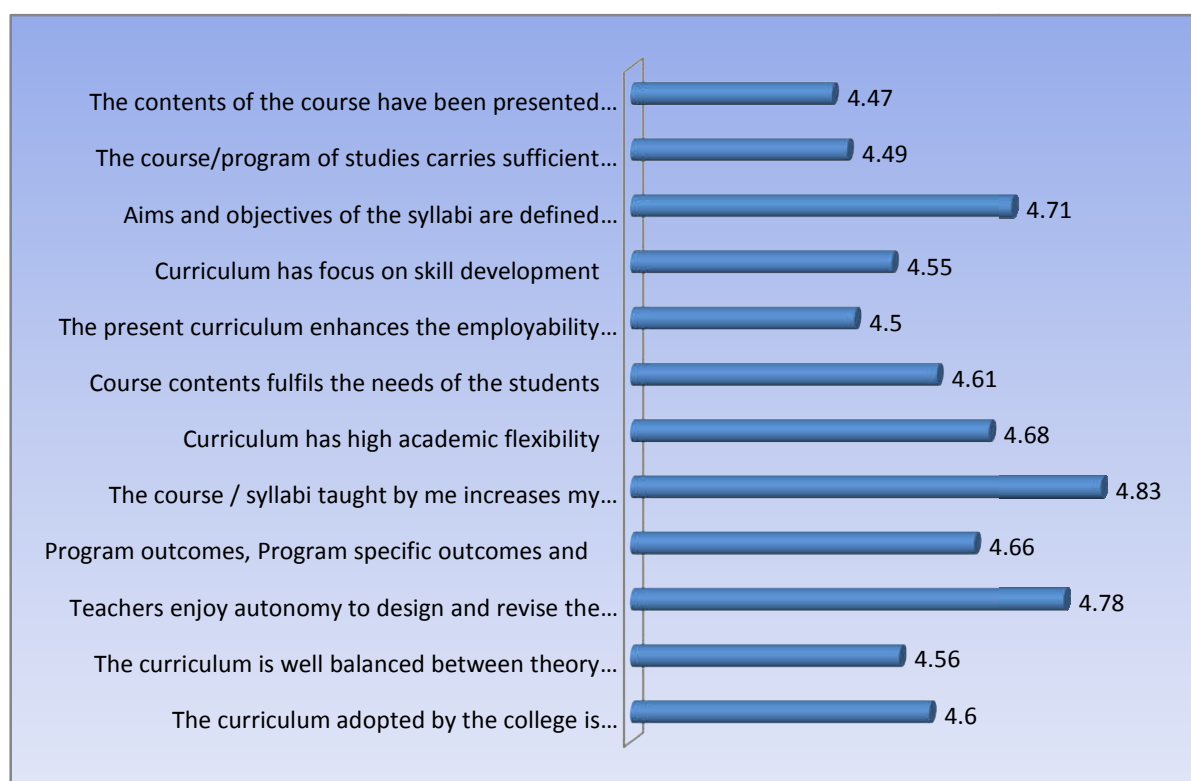
Mean score comparison of Teacher's opinion towards curriculum

Parameters	Mean	SD
The curriculum adopted by the college is contemporary and industry relevant	4.60	.552
The curriculum is well balanced between theory and application	4.56	.587
Teachers enjoy autonomy to design and revise the syllabus periodically	4.78	.419
Program outcomes, Program specific outcomes and Course outcomes are well defined	4.66	.481
The course / syllabi taught by me increases my knowledge and interest in the subject area	4.83	.384
Curriculum has high academic flexibility	4.68	.507
Course contents fulfils the needs of the students	4.61	.528
The present curriculum enhances the employability of the students	4.50	.656
Curriculum has focus on skill development	4.55	.574
Aims and objectives of the syllabi are defined clearly to Teachers and Students	4.71	.505

The course/program of studies carries sufficient number of optional papers	4.49	.624
The contents of the course have been presented from simple to complex form	4.47	.698

Figure - 1

Mean score comparison of Teacher's Feedback Parameters



Interpretation:

In order to examine the opinion of teachers towards curriculum, twelve key parameters were identified. Table1 and figure 1 reveals that all the teachers displayed a favourable mean score of more than four with regard to all the parameters



The American College, Madurai
NAAC – Criterion I - Curricular Aspects
Employers Feedback Report (2020 – 2021)

For the academic year 2020 – 21 the feedback on curriculum is collected from the employers by circulating the feedback forms through Google form on a five point scale ranging from strongly agree to strongly dis agree. The data is compiled and analysed through statistical tools. Nine key parameters were evaluated pertaining to curriculum. The key parameters are analysed with mean score comparison.

The important dimensions analysed are

1. Curriculum imparts subject specific/domain skills
2. Curriculum prepares students for lifelong learning with the ability to adapt to changing times and needs.
3. Curriculum provides interpersonal/managerial skills.
4. Curriculum focuses on communication skills, interaction skills, and presentation skills.
5. Curriculum encourages students to critically and creatively think.
6. Curriculum transaction is possible because of the unlimited freedom and a sense of responsibility
7. The curriculum has in-built life skills and career skills.
8. Curriculum can further be strengthened with periodical inputs from employers
9. Curriculum can provide more hands-on and field-work experiences in each semester instead of more theoretical papers

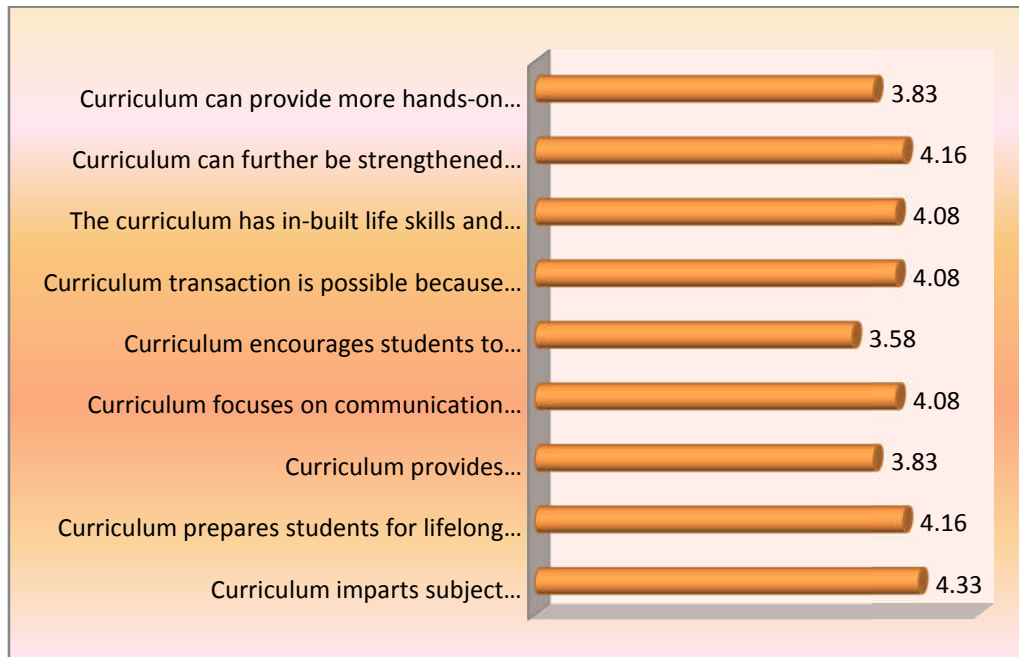

Dr. M. DAVAMANI CHRISTOBER
Principal & Secretary
The American College
Madurai-625 002

Table -1**Mean score comparison of employer opinion towards curriculum**

Dimensions	Mean	SD
Curriculum imparts subject specific/domain skills	4.33	.651
Curriculum prepares students for lifelong learning with the ability to adapt to changing times and needs.	4.16	.717
Curriculum provides interpersonal/managerial skills.	3.83	1.029
Curriculum focuses on communication skills, interaction skills, and presentation skills.	4.08	1.083
Curriculum encourages students to critically and creatively think.	3.58	1.164
Curriculum transaction is possible because of the unlimited freedom and a sense of responsibility	4.08	.996
The curriculum has in-built life skills and career skills.	4.08	.900
Curriculum can further be strengthened with periodical inputs from employers	4.16	.937
Curriculum can provide more hands-on and field-work experiences in each semester instead of more theoretical papers	3.83	1.466

Figure -1

Mean score comparison of employer opinion towards curriculum



Interpretation:

In order to examine the opinion of employers towards curriculum, nine parameters were identified. Table1 and figure 1 reveals that employers displayed a favourable mean score for majority of the parameters and only three parameters revealed moderate mean score



The American College, Madurai

An Autonomous Institution affiliated to Madurai Kamaraj University)
Re-accredited (2nd Cycle) by NAAC with Grade "A", CGPA – 3.46 on a 4-point scale

NAAC – Criterion I - Curricular Aspects

Alumni Feedback Report (2020 – 2021)

For the academic year 2020 – 21 the feedback on curriculum is collected from the alumni by circulating the feedback forms through Google form. The data is compiled and analysed through statistical tools. Nine key parameters were evaluated pertaining to curriculum. The key parameters are analysed with mean score comparison. The responses for the first question "College curriculum fulfils our expectations" alone has been collected on a five point likert scale ranging from strongly agree to strongly dis agree. Whereas questions from two to eight has been collected on a four point likert scale.

The nine key parameters are as follows

1. College curriculum fulfils our expectations
2. The courses included in the program you studied
3. How do you rate the sequence of topics in each unit?
4. State your opinion on the depth of course content
5. The course content for employment is
6. The course content for self employment is
7. The course content for Higher Education is
8. How do you evaluate the curriculum in terms of improving new skills?
9. How to enrich the curriculum

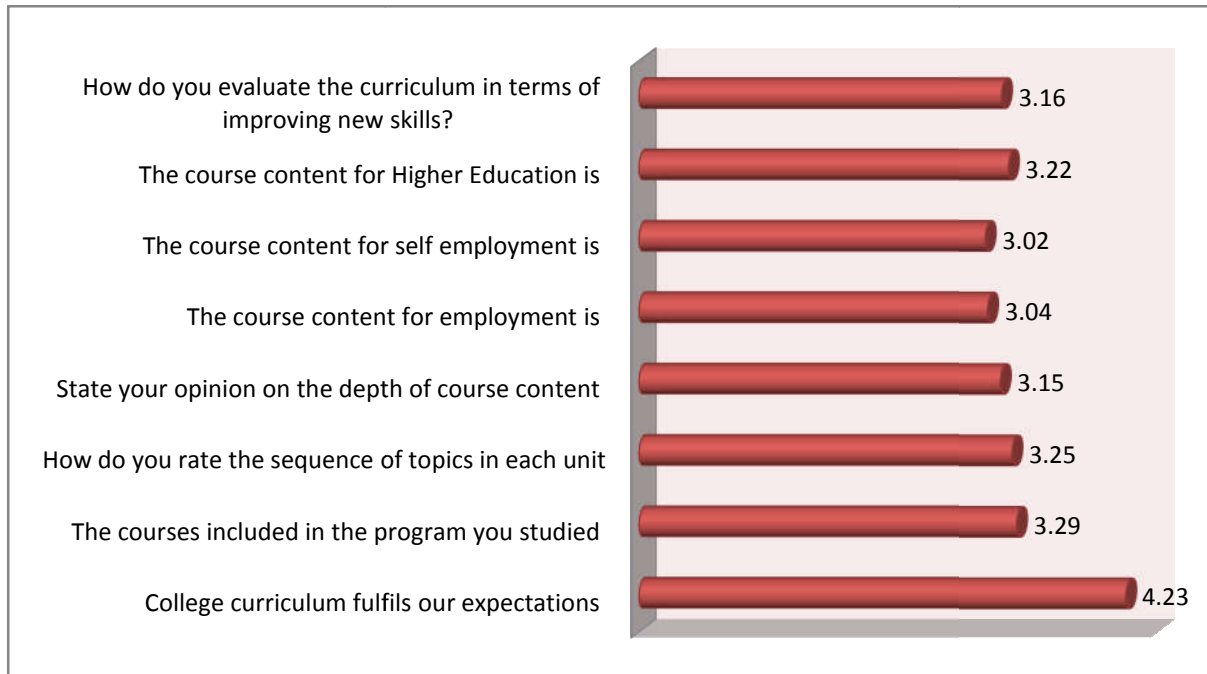
The results are displayed in the following table and figures.


Dr. M. DAVAMANI CHRISTOBER
Principal & Secretary
The American College
Madurai-625 002

Table 1: Mean score comparison of Alumni opinion towards curriculum

Dimensions	Mean	SD
College curriculum fulfils our expectations	4.23	.757
The courses included in the program you studied	3.29	.715
How do you rate the sequence of topics in each unit	3.25	.724
State your opinion on the depth of course content	3.15	.770
The course content for employment is	3.04	.828
The course content for self employment is	3.02	.858
The course content for Higher Education is	3.22	.797
How do you evaluate the curriculum in terms of improving new skills?	3.16	.782

Figure 1: Mean score comparison of Alumni opinion towards curriculum



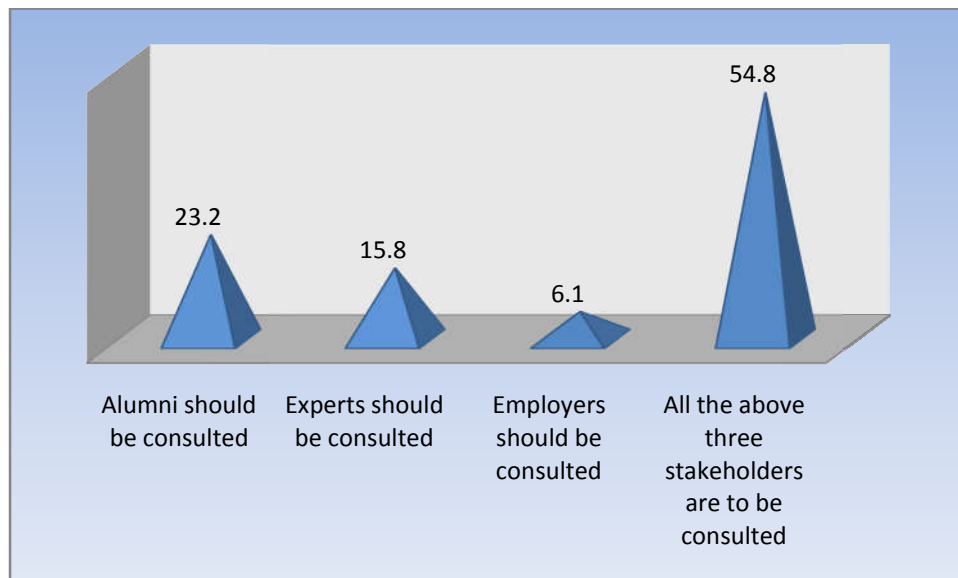
Interpretation:

In order to examine the opinion of alumni towards curriculum, nine parameters were identified. Table1 and figure 1 reveals that respondents displayed a moderate mean score for majority of the parameters

Table 2: Alumni opinion on enriching the curriculum

Dimensions	Frequency	Percentage
Alumni should be consulted	72	23.2
Experts should be consulted	49	15.8
Employers should be consulted	19	6.1
All the above three stakeholders are to be consulted	170	54.8

Figure 2: Alumni opinion on enriching the curriculum



Interpretation:

From the frequency and percentage analysis of table 2 and figure 2 it is evident that majority 54.8 per cent of the respondents are of the opinion that for enriching the curriculum all the stakeholders (alumni, experts, employers) has to be consulted.



THE AMERICAN COLLEGE, MADURAI

(An Autonomous Institution Affiliated to Madurai Kamaraj University)

Re-accredited (2nd Cycle) by NAAC with Grade “A” CGPA – 3.46 on a 4 - point scale

AQAR 2020 – 2021

Criterion 1 – Curricular Aspects

1.4 Feedback

Action Taken Report



The American College, Madurai
NAAC – Criterion I Curricular Aspects
Action Taken Report (2020 – 2021)

The institution collects feedback on curricular aspects and courses from stakeholders such as students, teachers, alumni and employers every year. The following gives a detailed report of the issue as received by the stakeholders and the action taken for those issues by the institution during the academic year 2020 – 2021. Based on the feedback and the action taken are illustrated in the following tables 1, 2, 3 and 4. The objective of this exercise is to gauge the impact of all the efforts of the institution on curriculum towards various stakeholders

Action Taken Report - Students

Observation:

It was observed that overall the students have given a positive feedback on all the eight parameters. Also it was found that the students were highly satisfied with the “Academic environment of the college for effective learning”

Table 1
Students Action taken report

S.No	Feedback Analysis	Action Taken
1	Students belonging to the department “B.Sc Physical Education” required courses which are latest and up-to-date	The issue has been discussed in the Heads’ meeting and has been addressed in the board of studies. The faculties were instructed to incorporate a latest and up-to-date curriculum.
2	Students belonging to the department “BA French” required the availability of text and reference materials in the library, required higher percentage of courses having focus on skill development and entrepreneurship and required better outcomes form the course. Also they needed an improvement in the components of internal assessment	The feedback was discussed with the department head and faculties. It was intimated that the department should ensure that enough books and study materials are available for the students. Suitable inputs were also given for the faculties to improve the components of internal assessment. The course in charges


Dr. M. DAVAMANI CHRISTOBER
Principal & Secretary
The American College
Madurai-625 002

		were instructed to equip the students with training programs focusing on skill development and entrepreneurship
3	Students belonging to the department "B.Sc Chemistry " required percentage of courses having focus on skill development and entrepreneurship	Based on the feedback received the same has been discussed with the head of the department and faculties. Staffs were advised to incorporate suitable modifications in the upcoming BOS for a curriculum with enriched skill development and entrepreneurship opportunities.
4	Students belonging to the department "BA English (Satellite campus)" required better availability of text and reference materials in the library , improved relevance of the subjects with curriculum , a latest and up-to-date courses , improved percentage of courses having focus on skill development and entrepreneurship. Also they needed an improvement in the components of internal assessment	Review meetings were conducted by the principal and senior professors with each individual faculty based on the feedback received. Suggestions, counselling and infrastructure support have been provided to all the faculties for better performance improvement.


Dr. M. DAVAMANI CHRISTOBER
 Principal & Secretary
 The American College
 Madurai-625 002

Action Taken Report – Teachers

Observation:

Analysis of the teacher's feedback for the year 2020-21 brought about the following information.

Table 2
Teachers Action taken report

S.No	Feedback Analysis	Action Taken
1	Most of the faculties are displayed a high satisfaction score with regard to all the twelve key parameters with a mean score value of more than 4	No action required


Dr. M. DAVAMANI CHRISTOBER
Principal & Secretary
The American College
Madurai-625 002

Action Taken Report – Alumni

Observation:

The analyses revealed that majority of the alumni are moderately satisfied with the curricular aspects adopted by the college.

Table 3
Alumni Action taken report

S.No	Feedback Analysis	Action Taken
1	Most of the alumni were of the opinion that for enriching the curriculum all the stake holders (Alumni, Experts & Employers) has to be consulted. Also the alumni were of the opinion that course content has to be enriched for self employment , employment , higher education , improving new skills , depth and sequence	Suggestions and recommendations cited by the alumni were considered and it was decided to invite alumni in the subsequent decision making process

Dr. M. DAVAMANI CHRISTOBER
Principal & Secretary
The American College
Madurai-625 002

Action Taken Report - Employers

Observation:

Analysis of the employer's feedback for the year 2020-21 resulted in the following information.

Table 4
Employers Action taken report

S.No	Feedback Analysis	Action Taken
1	Employers exhibited high satisfaction on six parameters of curricular aspects and a moderate level of satisfaction on three parameters	No action required

Dr. M. DAVAMANI CHRISTOBER
Principal & Secretary
The American College
Madurai-625 002



03.02.2022

Extract of the Minutes of the Governing Body – 2020 – 2021

Agenda: To consider the observations made on the feedback on curriculum from various stakeholders for further action

The Principal and the Deans discussed the same and recommended the following

1. Faculty members are requested to adopt latest teaching aids and pedagogy
2. The curriculum to be designed to meet the industry and entrepreneurial needs
3. The curriculum to be more skill oriented and to cater the latest global needs

The relevant points have been discussed in the Governing Body and approved for further implementation.

Principal & Secretary
The American College
Madurai-625 002